



**West Thames
College** London

**London's
Top College**

#1

Over 90%
Student Achievement
for 16-18s, 19+
& Overall

**IT'S
NEVER
TOO LATE**

**START YOUR NEW CHAPTER
WITH US**

**Free
Courses
for
adults***

**ADULT
EDUCATION**

COURSES 2024/2025



west-thames.ac.uk



020 8326 2000

WHY CHOOSE WEST THAMES COLLEGE?



London's No 1 For Student Achievement



Supporting your wellbeing and progression pathways



100+ courses to study



Excellent partnerships with local and national employers



State-of-the-art facilities



Teachers that are industry experts, having previously worked in the sector

OUR COLLEGE

West Thames College has two campuses - our main campus in Isleworth and our Skills+Logistics Centre in Feltham.



Isleworth Campus:

The main campus has a friendly, vibrant atmosphere and combines bright, modern purpose-built buildings with the historic grandeur of Spring Grove House - once the home of Sir Joseph Banks, who sailed the world with Captain Cook. Students benefit from a range of facilities including professional salons, theatre, dance studios, music recording & TV studios, sports facilities and much more.

London Road, Isleworth, Middlesex TW7 4HS



Feltham Campus:

Known as the Skills+Logistics Centre, our £3 million purpose-built centre provides you with hands on training needed to secure a job within your chosen profession. It includes multiple workshops and workspaces that create realistic work environments, allowing students to develop the specific skills required within the industry. You will be taught by real industry professionals, who will pass on their substantial expertise and knowledge.

77 Boundaries Road, Feltham, Middlesex TW13 5DR

All information is correct at time of publishing, please look at our website for up-to-date course information.

At West Thames College, you're at London's #1 college for achievement! We boast over 90% student achievement rates for 16-18s, 19+ & overall.

We're also rated as Good with Outstanding Features' by Ofsted.

*Source: Department of Education.

ABOUT US	4
Course and Entry Requirements Guide	5
Why choose us?	2
Entry requirements	4
Financial support	6
Help and support	8
About our courses	10

COURSES	12
Access to Higher Education	14
Accounting	16
Art, Design & Creative Media	20
Beauty Therapy	24
Business & Computing	34
Construction	38
English and Maths	44
ESOL	50
Hairdressing	52
Health and Care	58
Logistics	62
Makeup	64
Motor Vehicle	70
Science	74
Teacher Training	78
Fees and financial support	xx

OPEN DAYS AT WEST THAMES COLLEGE

Our Open Days are a chance to tour the facilities, meet the tutors and get a real taste of life on Campus.

They are offered throughout the year. For the latest dates please visit west-thames.ac.uk/opendays.

COURSE LEVEL AND ENTRY REQUIREMENTS GUIDE

Not sure which course level is right for you? Our handy table below should help.

If you still need assistance, please contact us on 020 8326 2000.

Level	Type of Course
Entry	Entry Level course
1	Foundation level designed to give you an introduction to a subject.
2	Intermediate level designed to develop your knowledge to an intermediate level.
3	Advanced level designed to build on your existing specialist knowledge and how you can apply this to real-life scenarios.
4	Designed to explore the subject in much greater detail, giving you the specialist skills needed for your chosen industry.
5	Designed to continue your learning from Level 4 and apply this knowledge to case studies and a major project.

Equivalent to	Typical Entry Requirements
N/A	No formal entry requirements.
GCSE grade D-G/3-1	No formal entry requirements.
GCSE grade A-C/7-4	Level 1 qualification or two GCSEs Grade D/3 or above. Experience of working at a Level 1 standard.
A Levels	Level 2 qualification or four GCSEs grade A*-C/9-4.
First year of university	Level 3 qualification or A Level.
Second year of university	Level 4 qualification in a similar subject such as a Higher National Certificate (HNC) or Professional Certificate.

West Thames offers a range of fees and financial support for adults studying at our college.

Free Level 3 Courses for those aged 19+

COURSE COULD BE FREE
depending on your circumstances*

If you are 19 or over and do not already have a Level 3 qualification or higher, you can access a free Level 3 qualification.

If you already have a Level 3 qualification or higher, but you earn below the National Living Wage annually (£25,000 annual gross salary or £25,642.50 in the Greater London area from April 2024) or are unemployed, you can also access these qualifications for free. This is regardless of any qualifications you already have.

English and maths

ESSENTIAL SKILLS: ENGLISH AND MATHS

FREE for students aged 19+ who do not already hold grade C/4 or above at GCSE in English and maths.

Digital Skills

ESSENTIAL SKILLS: DIGITAL

This course provides support for adult learners in developing modern digital skills for everyday life.

Advanced Learner Loan

ADVANCED LEARNER LOAN AVAILABLE

You can apply for an Advanced Learner Loan to help with the costs of a course. Loan eligibility does not depend on your income and there are no credit checks. The Loan can pay for your course fee as well as a number of other course related expenses such as the cost of:

- Childcare
- Equipment
- Special kits
- Books
- Travel and course trips
- Exam fees
- Art supplies and photographic materials

Did you know?

If you successfully complete a higher education course while using the Advanced Learner Loan, Student Finance England will 'write off' any outstanding loan balances you owe - this means you do not have to repay them.

Discretionary Learner Support

Discretionary Learner Support (DLS) is a fund that allows us to provide financial support to students on a course funded through the Education and Skills Funding Agency (ESFA) with a specific financial hardship preventing them from taking part in learning. To be eligible for DLS, all the following must apply:

- You are aged 19-23 on an FE course up to and including Level 3, or aged 24+ and on an FE course up to and including Level 2
- You are in receipt of benefits, and you have a family income of not more than £28,000.*

Loan Bursary

The Loan Bursary is designed to help students who receive the Advanced Learner Loan and need additional support. To be eligible, you must be aged 19+ and meet the following criteria:

- Be studying on a course at Level 3 or higher
- Be in receipt of the Advanced Learner Loan or have had your loan approved by the Student Loans Company
- Be in receipt of benefits*
- Have a family income of not more than £35,000.

**If on Universal Credit (UC), your family income including UC must be less than £35,000.*

Next Steps

If you would like to find out more, please contact studentwelfare@west-thames.ac.uk

We have an excellent reputation for the additional support we give our students.



Learning Support

If you have a physical, mental health or sensory impairment and/or learning disability, please let us know so that we can make arrangements for you.

- Extra 1:1 Literacy or numeracy with input from specialist staff members
- Small group and/or in-class support
- Specialist equipment and/or software, adapted material and/or furniture
- Adapted curriculum and/or modified assessment arrangements
- Specialist support (British Sign Language interpreter, sighted guide etc)
- Mentoring
- Counselling
- Transport for curriculum related trips



Counselling

Talk through problems or stressful situations in complete confidence with a professional counsellor.



Learning Resources Centre

A range of services to support your studies including computers, study spaces, online and offline resources and helpful staff.

The LRC offers a range of facilities including:

- Staff to help you find what you need and to support you in your studies
- Individual and group study spaces
- A Suite of PCs and Macs
- A dedicated working space for HE students with PCs and Macs
- 93 journals including magazines and newspapers
- e-books
- e-Resources (Encyclopedia Britannica Online, Britannica Image Quest, Emerald Insight, Care Knowledge, Digital Theatre Plus)
- e-Learning resources from the Blended Learning Consortium
- Book/audio packs for learners of English
- Online access to our Library Catalogue and your library account



Welfare and Support

Practical financial advice and help with bursaries and entitlements.

Including:

- Equipment
- Books
- Art supplies and photographic materials
- Travel and course trips
- Childcare
- Special kits
- Exam fees

Adults on funded courses or in receipt of an advanced learner loan may qualify for travel and childcare costs, hardship funding and residential support.



Careers Service

We have a dedicated team of Advisers, who can give the advice, information and support you need to achieve your career goals. Careers advice and guidance is impartial and provided by professionally qualified Careers Advisers who can support with your career planning from before you start your course until you leave the college.

- Preparing and developing your CV
- Applying to UCAS for university courses
- Helping you gain work experience, or part-time work



Our college nursery offers full and part-time places for children aged 3 months to 5 years, providing a safe and stimulating learning environment for your children while you study.

Funding and subsidies may be available, but places are limited. For an application form and more information, please contact the nursery on 020 8326 2318.

Vocational Courses

These courses provide practical knowledge in your chosen sector, and includes a lot of hands-on learning. These courses may also included some tests and exams as part of the qualification.

We offer these from Entry Level - Level 5 in a wide range of areas.

Essential Skills, including English & Maths

These are courses that are designed to develop your skills in English, Maths and Digital.

These skills are essential to boost your career prospects. You will be able to build your confidence and ability in these areas, and receive a qualification upon successful completion.

Apprenticeships

Apprenticeships are the ideal way to get hands-on experience whilst studying for a qualification at the same time.

An apprenticeship typically involves spending four days a week in a work environment gaining practical skills and one day a week studying at college.

You will receive a salary of approximately £200 per week, depending on the job you are doing and your employer.

Apprenticeships take at least 12 months to complete – usually 12-15 months for Level 2 and 18-24 months for Level 3.

Higher Education

For students who want to progress to higher-level study, we also offer Higher Education courses, from level 4 and above.

Our provision includes small class sizes, direct progression opportunities to university for a full-degree, and specific HE facilities at the College.

COURSES WE OFFER ARE:

- Level 4 Diploma in Business Administration
- Level 4 Specialist Makeup
- Higher National Diploma in Film and TV
- Higher National Certificate in Film and TV
- Higher National Diploma in Applied Biology
- Higher National Certificate in Applied Biology
- Certificate in Education in Further Education and Skills



COURSES	12
Access to Higher Education	14
Accounting	16
Art, Design & Creative Media	20
Beauty Therapy	24
Business & Computing , including essential digital skills	34
Construction	38
English and Maths	44
ESOL	50
Hairdressing	52
Health and Care	58
Logistics	62
Makeup	64
Motor Vehicle (including Electric Vehicle)	70
Science	74
Teacher Training	78
Fees and financial support	xx

Ready to start studying at West Thames College? Here's what to do next.



Apply online

1. Visit west-thames.ac.uk
2. View our range of courses on our 'Course Explorer' and click the 'View Courses' button on your preferred subject area.
3. Select the course you want to study, then click the 'Apply now' button and complete an application form.



Apply in person

Pop into our Information Centre to apply in person, receive advice or book an appointment to speak to a teacher. Please call 020 8326 2000 to check opening times before visiting us.

Please note that some courses require an interview before you enrol. You should receive notification of an interview within 28 days of submitting your application.

Not sure what you want to study?

If you are not sure which course is right for you, please call 020 8326 2000 to arrange an appointment with a careers' adviser.



INTRODUCTION

Access to Higher Education courses are designed to prepare students who have been out of education for some time to go on to further study at university or into employment. Access courses are full-time.

KEY FACTS

- Supportive teachers help build your confidence
- Brush up your literacy and numeracy skills
- Work experience on some Access courses
- Help with UCAS university applications.

Courses

Name of Course	Location	Days/Times	Starts	Ends	Fees
Level 3 Access to Nursing	Isleworth	Tuesdays and Thursdays	September 2024	June 2025	£5,040.00

ACCESS TO NURSING

LEVEL 3

The Level 3 Access to HE Diploma (Nursing) is a nationally recognised qualification regulated by the Quality Assurance Agency for Higher Education (QAA) which is designed to provide preparation for study in higher education (HE) in the UK for adults returning to education. This course is a one-year courses designed for mature students (aged 19+) who want to gain the study skills and academic knowledge required for university-level study to pursue a career in nursing or related profession.

STARTS/ENDS: September 2024 -June 2025

DURATION: 1 year (Full time)

FEES: £5,040.00 (Full-Cost)

DAYS/TIME: Tuesdays and Thursdays

LOCATION: Isleworth

WHAT WILL I STUDY?

This course is a one-year courses designed for mature students (aged 19+) who want to gain the study skills and academic knowledge required for university-level study to pursue a career in nursing or related profession. The course content covers Biology, Sociology, Nursing studies and Study skills.

The course is taught by tutors who have experience with and are understanding of the needs of people returning to study after a long break.

You will study:

- The role of the Health or Social Care professional
- Essay Writing
- Reading and comprehension of texts
- Arithmetic Skills for Health studies Human Biology
- Anatomy and Physiology
- Cells
- Disease and immunity
- Homeostasis and controlling factors in the body
- The cardiovascular system
- Nursing studies
- Communication Skills in a Professional Setting
- Ethical Dilemmas
- Health Promotion and Health Education
- Extended Project Sociology
- Sociology of health Study skills
- Preparation for HE
- Examination skills

NEXT STEPS:

You may progress to a degree programme related to Nursing. These may include-Adult Nursing, Biological Sciences, Child Nursing, Health and Social Care, Health Promotion and Public Health, Learning Disabilities Nursing, Mental Health Nursing, Midwifery, Occupational Therapy, Public Health and a wide range of combined and related degrees.

ENTRY REQUIREMENTS:

Universities require learners to have GCSEs grade 9-5/4 (A*-C) in English and Maths to progress onto a degree in Nursing. Therefore, to join this Access course, students must already have their GCSE English (at grade A*-C/grade 9-4 and have the ability to sit their GCSE Maths whilst competing the access course. If you need to achieve your GCSE Maths, you will be required to undertake an initial assessment to assess your suitability to sit this.

Fee information: If you are aged 19-24 years and this is your first level 3 course, you may be eligible for free tuition. This course is also part of the free courses for jobs, so you may be eligible for free tuition subject to terms and conditions. If you are 24 years or older and not eligible 'under the free courses for jobs' you will need to apply for an Advanced learner loan. You may not need to repay this loan if you progress to complete your university degree.

Guide to fees and funding:

These icons indicate there are concessions and funding available for students, with some courses being completely free for students!

Free Courses for Adults Advanced Learner Loan Essential Skills: English and Maths Essential Skills: Digital Skills

*Concessions are available on most of our courses, with some being free for adults. This depends on eligibility and selected criteria.

Funding is subject to qualifying criteria and selected courses at Level 3 and above.



INTRODUCTION

Whether you want to move up the ladder or launch a whole new career in accountancy, AAT qualifications will equip you with the expertise and confidence to succeed. Our Accounting courses are accredited by the Association of Accounting Technicians, from the Level 2 Accounting Certificate to Level 4 Advanced Diploma.

We offer award-winning blended learning courses in partnership with Mindful Education, which combine online study and regular face-to-face lessons with a college tutor - meaning you can flex your studies around your day-to-day, setting you up for success.

KEY FACTS

- Tutors with industry experience and contacts
- Practical work-related projects
- Accredited centre for AAT

Flexible, inspiring and engaging, our range of Online and On Campus courses are expertly designed to bring learning to life and help you achieve outstanding results.



FREE COURSE FOR ADULTS

AWARD IN BOOKKEEPING

LEVEL 1 AAT ACCESS AWARD.

For those who want to develop a career in bookkeeping and accountancy.

STARTS: September 2024, January 2025

DURATION: 12 weeks

FEES: £450.00 (Full cost)

ASSESSMENT: External exam via AAT

DAYS/TIME: 1 evening per week

MODE OF DELIVERY: In class

WHAT WILL I STUDY?

Introduction to bookkeeping, working within bookkeeping, bookkeeping and accounts, spreadsheet software.

NEXT STEPS:

This qualification will enable you to work at a junior role in an accounts office and/ or progress to the Level 2 AAT Foundation Certificate.

ENTRY REQUIREMENTS:

You should have basic literacy and numeracy skills.

Courses

Name of Course	Location	Days/Times	Starts	Ends	Fees
Level 1 AAT Award in Book Keeping	Isleworth	1 evening per week	January 2025 September 2024	June 2025 January 2025	£450.00
Level 2 AAT Award in Book Keeping	Isleworth	1 evening per week	January 2025	June 2025	£690.00
Level 2 AAT Certificate in Book Accounting	Isleworth	1 evening per week	September 2024 January 2025	January 2025 June 2025	£1,162.00
Level 3 AAT Diploma in Accounting	Isleworth	2 evening per week	September 2024	June 2025	£1,162.00

Guide to fees and funding:

These icons indicate there are concessions and funding available for students, with some courses being completely free for students!

Free Courses for Adults
 Advanced Learner Loan
 Essential Skills: English and Maths
 Essential Skills: Digital Skills

*Concessions are available on most of our courses, with some being free for adults. This depends on eligibility and selected criteria.

Funding is subject to qualifying criteria and selected courses at Level 3 and above.



FREE COURSE FOR ADULTS

CERTIFICATE IN BOOKKEEPING

LEVEL 2 AAT CERTIFICATE IN BOOKKEEPING.

AAT Certificate in Bookkeeping (Online and On Campus). For those who want to develop a career in bookkeeping and accountancy.

STARTS: September 2024, January 2025

FEES: £690.00

ASSESSMENT: This course is assessed through a total of two computer-based exams, one taken at the end of each unit.

DAYS / TIME: 1 evening per week

MODE OF DELIVERY: In class

DURATION: 14 weeks

WHAT WILL I STUDY?

This short course, studied over 14 weeks will equip you with the skills and knowledge needed to manage books effectively, including double entry bookkeeping, and associated documents and processes, up to Trial Balance standard.

NEXT STEPS:

On successful completion of this course, you can progress to higher level AAT Accounting Qualifications (Level 3 and then on to Level 4).

Students completing this Level 2 AAT Certificate in Bookkeeping may wish to go on and complete the full Level 2 AAT Certificate in Accounting. If you do choose to continue your studies in this way, then your achievements in the Bookkeeping qualification are carried over to the longer accounting qualification.

You might be eligible for a fully funded Level 3 course. Alternatively, you can apply for an Advanced Learner Loan to cover the cost of your Level 3 study. Please ask a member of college staff for more information.

ENTRY REQUIREMENTS:

There are no formal entry requirements for this course. Previous knowledge of accounting or a Level 1 Bookkeeping qualification would be advantageous but not essential.

CERTIFICATE IN ACCOUNTING



LEVEL 2 AAT LEVEL 2 CERTIFICATE FOR ACCOUNTING TECHNICIANS (QCF).

For anyone who is seeking an introduction to basic accounting principles and skills.

STARTS: September 2024

FEES: £1,162.00

DURATION: 10 weeks

ASSESSMENT: This course is assessed through computer-based exams and a synoptic assessment, which draws on and assesses knowledge and understanding from across the qualification.

DAYS / TIME: 1 evening per week (Blended)

MODE OF DELIVERY: In class + Remote

WHAT WILL I STUDY?

This flexible course is delivered in partnership with Mindful Education and combines online learning with face-to-face lessons in the classroom.

You will study some of the following areas in accounting:

- Introduction to Bookkeeping

- Principles of Bookkeeping
- Principles of Costing
- The Business Environment

NEXT STEPS:

You can progress to Level 3 and then on to Level 4 of the AAT Accounting Qualification. Alternatively, you can apply for an Advanced Learner Loan to cover the cost of your Level 3 study. Please ask a member of college staff for more information.

ENTRY REQUIREMENTS:

Previous knowledge of accounting or a Level 1 Bookkeeping qualification would be advantageous but not essential.

FREE COURSE FOR ADULTS

ADVANCED LEARNER LOAN AVAILABLE

DIPLOMA IN ACCOUNTING

LEVEL 3 AAT LEVEL 3 DIPLOMA FOR ACCOUNTING TECHNICIANS (QCF).

Ideal for anyone who is looking to advance their existing knowledge of accounting.

STARTS: September 2024

FEES: £1,162.00

DURATION: 34 weeks

ASSESSMENT: This course is assessed through computer-based exams for each unit.

DAYS / TIME: 2 evenings per week

MODE OF DELIVERY: In class

WHAT WILL I STUDY?

- This course is delivered with face-to-face lessons in the classroom.
- You will study some of the following areas in accounting:
 - Financial Accounting: Preparing Financial Statements
 - Management Accounting Techniques
 - Tax Processes for Businesses
 - Business Awareness

NEXT STEPS:

You can progress to Level 3 and then on to Level 4 of the AAT Accounting Qualification.

Alternatively, you can apply for an Advanced Learner Loan to cover the cost of your Level 3 study. Please ask a member of college staff for more information.

ENTRY REQUIREMENTS:

Previous knowledge of accounting or a Level 1 Bookkeeping qualification would be advantageous but not essential.

Guide to fees and funding:

These icons indicate there are concessions and funding available for students, with some courses being completely free for students!

 Free Courses for Adults
  Advanced Learner Loan
  Essential Skills: English and Maths
  Essential Skills: Digital Skills

*Concessions are available on most of our courses, with some being free for adults. This depends on eligibility and selected criteria.

Funding is subject to qualifying criteria and selected courses at Level 3 and above.



INTRODUCTION

Want to learn cutting edge skills in music technology, game design, media production, theatre production or audio production? Our courses are taught by highly experienced tutors, who will teach you in our amazing new state-of-the-art studios.

We have excellent success rates and many of our students go on to find employment in leading media and production companies around London.

Some of our Art & Design courses are run in partnership with University of the Arts London.



KEY FACTS

- Amazing facilities include a TV studio with professional cameras and chroma key special effects, sound recording studios with ProTools HD, Logic Pro and surround sound, digital video editing suites with Final Cut Pro, audio/MIDI music production suites and a multimedia suite
- You will perform and engineer live gigs
- Students gain exciting work experience placements and have signed record deals and gone on to work for Sky, Kiss FM and Create and Craft shopping channel
- Teachers with many years of industry experience.

FREE COURSE FOR ADULTS

AWARD IN CREATIVE & DIGITAL ARTS

LEVEL 2 UAL LEVEL 2 AWARD IN ART & DESIGN.

For those who want to develop skills and confidence in a range of creative design theories.

STARTS: September-December 2024

FEES: £400.00 (Full cost)

DAYS / TIME: Daytime, 2 days a week

LOCATION: Isleworth

DURATION: 10 weeks

WHAT WILL I STUDY?

This course will encourage you to be adventurous and open minded in exploring a wide range of materials and processes through a series of mini projects including;

- Observational studies
- Life drawing
- Surface pattern and textiles
- Photography
- Printmaking

You will develop personal skills and confidence in a range of creative design theories linked to artists and designer investigations, through research investigations and a gallery or exhibition visit. You will be given the opportunity to collaborate with your peers and develop personal presentation skills that you can use to showcase your artwork through digital portfolios, social media and blogs.

NEXT STEPS:

You may wish to progress to the full Level 2 Diploma in Art & Design upon successfully finishing this 2-unit introduction course.

ENTRY REQUIREMENTS:

None but you will be asked to take part in an interview to discuss your interest in the subject.

Courses

Name of Course	Location	Days/Times	Starts	Ends	Fees
Level 2 Award in Creative and Digital Arts	Isleworth	Daytime, 2 days a week	September 2024	December 2024	£400
Level 4 HNC Creative Media Production	Isleworth	Daytime, 2 days a week	September 2024	June 2025	£5,000
Level 5 HND Creative Media Production	Isleworth	Daytime, 2 days a week	September 2024	June 2025	£5,000

Guide to fees and funding:

These icons indicate there are concessions and funding available for students, with some courses being completely free for students!

Free Courses for Adults
 Advanced Learner Loan
 Essential Skills: English and Maths
 Essential Skills: Digital Skills

*Concessions are available on most of our courses, with some being free for adults. This depends on eligibility and selected criteria.

Funding is subject to qualifying criteria and selected courses at Level 3 and above.





ADVANCED LEARNER LOAN AVAILABLE

CREATIVE MEDIA PRODUCTION – HIGHER NATIONAL CERTIFICATE (HNC)

LEVEL 4
The Higher National Certificate in Creative Media Production (Film) RQF aims to develop students as professional, self-reflecting individuals able to meet the demands of employers in Creative Media Production and adapt to a constantly changing world.

STARTS: September 2024-June 2025
FEES: £5,000 (Full cost)
DAYS / TIME: Daytime, two days a week
LOCATION: Isleworth
DURATION: 1 year

WHAT WILL I STUDY?
You will develop the skills required to work within various media industries via hands-on experience and tutoring. As part of a production team, you will be encouraged to develop various productions from concept to screen. You will use the latest digital equipment in our Media and Music Centre to produce programmes within a professional context, including a multi-camera TV studio and editing suites equipped with Final Cut, Adobe Premiere and Photoshop.

- You will study:**
- Single camera techniques
 - Music video production
 - Television documentary production
 - Radio production

- Promotional video production
- Film and video editing
- Television news techniques

NEXT STEPS:
Progressing to HND Film and TV Level 5.

ENTRY REQUIREMENTS:
The standard minimum entry qualification is a grade D at A Level and 80 UCAS points, preferably supported by a pass in GCSE English however each application will be assessed on an individual basis.



ADVANCED LEARNER LOAN AVAILABLE

CREATIVE MEDIA PRODUCTION – HIGHER NATIONAL DIPLOMA (HND)

LEVEL 5
The Higher National Diploma in Creative Media Production (Film) RQF aims to develop students as professional, self-reflecting individuals able to meet the demands of employers in Creative Media Production and adapt to a constantly changing world.

STARTS: September 2024-June 2025
FEES: £5,000 (Full cost)
DAYS / TIME: Daytime, Two days a week
LOCATION: Isleworth
DURATION: 1 year

WHAT WILL I STUDY?
You will develop the skills required to work within various media industries via hands-on experience and tutoring. As part of a production team, you will be encouraged to develop various productions from concept to screen. You will use the latest digital equipment in our Media and Music Centre to produce programmes within a professional context, including a multi-camera TV studio and editing suites equipped with Final Cut, Adobe Premiere and Photoshop.

- You will study:**
- Single camera techniques
 - Music video production
 - Television documentary production
 - Radio production
 - Promotional video production
 - Film and video editing
 - Television news techniques

NEXT STEPS:
Final year of a BA (Hons) degree or employment in the creative media industries. Opportunities include setting up your own small filming production company or freelance work as a camera person or film editor.

ENTRY REQUIREMENTS:
The standard minimum entry qualification is a grade D at A Level and 80 UCAS points, preferably supported by a pass in GCSE English however each application will be assessed on an individual basis.



Guide to fees and funding:

These icons indicate there are concessions and funding available for students, with some courses being completely free for students!

Free Courses for Adults Advanced Learner Loan Essential Skills: English and Maths Essential Skills: Digital Skills

*Concessions are available on most of our courses, with some being free for adults. This depends on eligibility and selected criteria.

Funding is subject to qualifying criteria and selected courses at Level 3 and above.



INTRODUCTION

Our Beauty Therapy courses are taught by teachers with professional industry experience so that you qualify, and ready for work, as well as becoming confident in your professional skills.

On our Beauty Therapist courses you'll train in professional salons and take part in industry visits and exhibitions. These qualifications lead to a career in beauty therapy.

KEY FACTS

- Our beauty salons are open to the public, giving you lots of opportunities to develop your client handling skills
- Students take part in national competitions such as WorldSkills UK and college competitions sponsored by local businesses
- Excellent links with Dermalogica, Fakebake, MAC and other cosmetics companies ensure students are experienced in using professional products.

FREE COURSE FOR ADULTS

BEAUTY THERAPY

LEVEL 2

This course covers full professional face and skin care treatment, facials, makeup, manicure and pedicure, anatomy and physiology and depilatory waxing of facial and body hair, lash and brow tinting, and eyebrow shaping.

You will also take part in salon administration and reception duties.

STARTS: September 2024-June 2025

FEES: Please visit west-thames.ac.uk/fees-policy or contact 020 8326 2000 for more information.

DAYS / TIME: Daytime, one day a week

DURATION: 1 year

WHAT WILL I STUDY?

Facials, makeup, manicure, pedicure, anatomy and physiology, depilatory waxing, tanning, lash and brow tinting, eyebrow shaping, stock display, reception and salon administration, with English language support.

In each unit you will perform practical skills, submit course work tasks and sit tests. To gain employment in all skills and to graduate to Level 3 the full award is necessary.

NEXT STEPS:

Level 3 VTCT Diploma in Beauty Therapy or Beauty Therapy Treatments to become a fully qualified beauty therapist.

ENTRY REQUIREMENTS:

A good general education with 2 GCSEs at grades A*-C/grades 9-5, preferably including English language and a science subject, or successful completion of Foundation Level Beauty Therapy with functional skills in English.

*Subject to eligibility, providing evidence, and meeting the entry criteria.

Courses

Name of Course	Location	Days/Times	Starts	Ends	Fees
Level 2 Beauty Therapy	Isleworth	Daytime, one day a week	September 2024	June 2025	£1,350.00
Level 2 Beauty Specialist Techniques	Isleworth	Evening, one day a week	September 2024	June 2025	£1,316.00
Level 2 Beauty Therapy with English Support	Isleworth	Daytime, two days a week	September 2024	June 2025	£1,555.00
Level 2 Award in Nail Technology	Isleworth	Daytime, one day a week	September 2024 February 2025	February 2025 June 2024	£502.00
Level 3 Intensive Beauty Therapy	Isleworth	Daytime, one day a week	September 2024	June 2025	£1,231.00
Level 3 Beauty Therapy Treatments	Isleworth	Evening, two days a week	September 2024	June 2025	£1,197.00
Level 4 Certificate in Skin Needling	Isleworth	Daytime, one day a week	December 2024	March 2025	£885.00
Level 4 Certificate in Skin Peeling	Isleworth	Daytime, one day a week	March 2025	June 2025	£885.00
Level 5 Beauty including Tattoo Removal	Isleworth	Daytime, one day a week	September 2024	January 2025	£1,216.00



BEAUTY SPECIALIST TECHNIQUES

FREE COURSE FOR ADULTS

LEVEL 2

This course covers full professional face and skin care treatment, facials, makeup, manicure and pedicure, anatomy and physiology and depilatory waxing of facial and body hair, lash and brow tinting, and eyebrow shaping.

FEES: £1,316.00

STARTS: September 2024 - June 2025

DAYS / TIME: Evening, one day a week

LOCATION: Isleworth

DURATION: 1 year

WHAT WILL I STUDY?

Facial treatments, skin care, lash and brow tinting and shaping, manicure and pedicure, waxing, tanning, related anatomy and physiology, professional conduct, customer service at reception, stock display and health and safety.

NEXT STEPS:

Level 3 Beauty Therapy Treatments to become a fully qualified beauty therapist.

ENTRY REQUIREMENTS:

A good general education with good written English. GCSE biology is an advantage. You must be highly motivated and able to practice your treatments at home (we recommend 4 hours home study per week).

AWARD IN NAIL TECHNOLOGY

FREE COURSE FOR ADULTS

LEVEL 2

This daytime Level 2 course is for those who wish to study to become a nail technician.

STARTS: September 2024, February 2025

FEES: £502.00

DAYS / TIME: One day a week (Daytime)

LOCATION: Isleworth

DURATION: 21 weeks

WHAT WILL I STUDY?

This qualification has been specifically designed to develop the knowledge, understanding and skills to prepare learners for employment as a junior nail technician. Learners will have their nail services skills assessed in a real or realistic working environment. This qualification includes all the required elements to work effectively as a nail technician including: providing and maintaining nail enhancements, manicure treatments, health and safety and client care. Example of extra units could include pedicure and nail art.

NEXT STEPS:

Career opportunities exist in a variety of contexts as a junior nail technician, including: Commercial nail salon, Retail concession 'nail bar' and as a self employed/mobile/home-based technician. Whilst this qualification's primary purpose is to prepare learners for employment as a junior nail technician, learners may choose to develop their skills further by undertaking Technical Level qualifications at Level 3, including: VTCT Level 3 NVQ Diploma in Nail Services and VTCT Level 3 Diploma in Nail Technology Studies.

ENTRY REQUIREMENTS:

Entry onto this qualification can be via previous attainment of a Level 1 qualification in beauty therapy and/or a successful skills test and interview.

INTENSIVE BEAUTY THERAPY

ADVANCED LEARNER LOAN AVAILABLE

LEVEL 3

This advanced course covers the practical and theoretical aspects of beauty therapy, including anatomy and physiology, electrical facial and body treatments, Indian head massage, body massage, hot stones massage and microdermabrasion. You will also learn about salon management and administration and health and safety. You may visit a major exhibition and take part in competitions.

FEES: £1,231.00

STARTS: September 2024-June 2025

DAYS / TIME: Daytime, one day a week

LOCATION: Isleworth

DURATION: 1 year

WHAT WILL I STUDY?

Electrical facial and body treatments, Indian head massage, body massage, hot stone massage, microdermabrasion, health and safety, client care and related anatomy. You may visit a major exhibition and take part in competitions.

NEXT STEPS:

Further your employment as a beauty therapist and/or study part-time specialist courses.

ENTRY REQUIREMENTS:

NVQ or VTCT (VRQ) Level 2 Diploma in Beauty Therapy and a good general education. You should be patient, tolerant, creative and have a desire to succeed. You will need to fill in an application form and attend an interview, which will give you the opportunity to ask detailed questions about the course. References will be requested and entry criteria projects may be set.

BEAUTY INCLUDING TATTOO REMOVAL

FREE COURSE FOR ADULTS

LEVEL 5

VTCT Certificate. The VTCT Level 5 Certificate in Laser Tattoo Removal is an advanced therapy qualification aimed at Level 4 qualified practitioners aged 18 and over who wish to add this therapy to their repertoire of treatment offerings.

STARTS: September 2024 - January 2025

FEES: £1,216.00.

DAYS / TIME: Daytime, one day a week

LOCATION: Isleworth

DURATION: 10 weeks

WHAT WILL I STUDY?

This qualification is developed by employers and national occupational standards for beauty therapy and includes all the required elements to work effectively as a fully commercial laser tattoo removal practitioner. Learners must achieve all mandatory units which include:

- Principles and practice of non-medical aesthetic therapies



- Advanced consultation for non-medical aesthetic therapies
- Advanced skin care for non-medical aesthetic therapies
- Remove or fade tattoos using Q Switched Laser systems

Throughout this qualification, learners will develop their knowledge and understanding of relevant anatomy and physiology and health and safety pertaining to Level 5 non-medical aesthetic therapies. They will also develop the knowledge, understanding and skills to consult with and analyse clients whilst providing laser tattoo removal treatments. In parallel, learners will develop their communication and customer service skills and widen their knowledge of the principles and practices of non-medical aesthetic therapies, all of which are valued highly by employers.

NEXT STEPS:

The primary purpose of this qualification is to prepare learners for employment in the advanced non-medical aesthetic industry providing laser tattoo removal techniques.

Additionally, learners may choose to further develop their knowledge and skills by completing supplementary specialist qualifications at Level 5 in the following:

- Advanced blemish removal

After this course you can work within the advanced beauty industry and study further advanced treatments.

ENTRY REQUIREMENTS:

Learners are required to hold a Level 4 Laser and IPL qualification to progress onto Level 5 Tattoo Removal, and be aged 18 years or above.

BEAUTY THERAPY TREATMENTS

FREE COURSE FOR ADULTS

LEVEL 3

This 1-year intensive evening course will enable you to work as a beauty therapist in the popular beauty industry. You will study body massage, electrical body treatments with diet and exercise advice, advanced electrical facial treatments, client handling and related anatomy.

FEES: £1,197.00

STARTS: September 2024 - June 2025

DAYS / TIME: Evening, two days a week

LOCATION: Isleworth

DURATION: 1 year

WHAT WILL I STUDY?

Electrical facial and body treatments, Indian head massage, hot stone massage, body massage, microdermabrasion, salon management, retail, anatomy, and physiology.

NEXT STEPS:

Work as a beauty therapist in a salon, become self-employed or take further specialist courses.

ENTRY REQUIREMENTS:

Level 2 NVQ or VTCT in Beauty Therapy.

A good general education and good written English are essential. You must be highly motivated and able to practice your treatments at home (at least 6 hours per week recommended).

CERTIFICATE IN SKIN NEEDLING

ADVANCED LEARNER LOAN AVAILABLE

LEVEL 4

VTCT Certificate (QCF) is an advanced therapy qualification aimed at level 3 qualified practitioners aged 18 and over, who wish to add this therapy to their repertoire of treatment offerings.

FEES: £885.00 (Full cost)

STARTS: December 2024 - March 2025

DAYS / TIME: 1 day a week (Daytime)

LOCATION: Isleworth

DURATION: 12 weeks

WHAT WILL I STUDY?

Throughout this qualification, learners will develop their knowledge and understanding of relevant anatomy and physiology and health and safety pertaining to level 4 non-medical aesthetic therapies.

They will also develop the knowledge, understanding and skills to consult with and analyse clients whilst providing skin needling treatments. In parallel, learners will develop their communication and customer service skills and widen their knowledge of the principles and practices of level 4 non-medical aesthetic therapies, all of which are valued highly by employers.

- Principles and practice of non-medical aesthetic therapies
- Advanced consultation for non-medical aesthetic therapies
- Advanced skin care for non-medical aesthetic therapies
- Provide cosmetic skin needling treatments

NEXT STEPS:

The primary purpose of this qualification is to prepare learners for employment in the advanced non-medical aesthetic industry providing skin needling techniques. Additionally, learners may choose to further develop their knowledge and skills by completing supplementary specialist qualifications at level 4 in one or more of the following areas: Skin peeling, Radio frequency or Ultrasound.

ENTRY REQUIREMENTS:

Level 3 Beauty Therapy qualification..

CERTIFICATE IN SKIN PEELING

ADVANCED LEARNER LOAN AVAILABLE

LEVEL 4

The VTCT (ITEC) Level 4 Certificate in Skin Peeling is an advanced therapy qualification aimed at level 3 qualified practitioners aged 18 and over, who wish to add this therapy to their repertoire of treatment offerings.

FEES: £885.00 (Full cost)

STARTS: March 2025 – June 2025

DAYS / TIME: 1 day a week (Daytime)

LOCATION: Isleworth

DURATION: 15 weeks

WHAT WILL I STUDY?

Throughout this qualification, learners will develop their knowledge and understanding of relevant anatomy and physiology and health and safety pertaining to level 4 non-medical aesthetic therapies.

They will also develop the knowledge, understanding and skills to consult with and analyse clients whilst

Guide to fees and funding:

These icons indicate there are concessions and funding available for students, with some courses being completely free for students!

Free Courses for Adults
 Advanced Learner Loan
 Essential Skills: English and Maths
 Essential Skills: Digital Skills

*Concessions are available on most of our courses, with some being free for adults. This depends on eligibility and selected criteria.

Funding is subject to qualifying criteria and selected courses at Level 3 and above.

providing skin peeling treatments. In parallel, learners will develop their communication and customer service skills and widen their knowledge of the principles and practices of level 4 non-medical aesthetic therapies, all of which are valued highly by employers.

- Principles and practice of non-medical aesthetic therapies
- Advanced consultation for non-medical aesthetic therapies
- Advanced skin care for non-medical aesthetic therapies
- Provide skin peeling treatments

NEXT STEPS:

The primary purpose of this qualification is to prepare learners for employment in the advanced non-medical aesthetic industry providing skin peeling techniques. Additionally, learners may choose to further develop their knowledge and skills by completing supplementary specialist qualifications at level 4 in one or more of the following areas: Radio frequency, Skin needling or Ultrasound.

ENTRY REQUIREMENTS:

Level 3 Beauty Therapy qualification.

*Subject to eligibility, providing evidence, and meeting the entry criteria.

DESTINATION HAIR AND BEAUTY WITH ENGLISH LANGUAGE

FREE COURSE FOR ADULTS

LEVEL 1

VTCT Award. For those who wish to work towards a career within the hair and beauty industries whilst improving their English language skills.

STARTS: September 2024 – June 2025

FEES: Please visit west-thames.ac.uk/fees-policy or contact 020 8326 2000 for more information.

DAYS / TIME: Two days a week (Daytime)

LOCATION: Isleworth

DURATION: 1 year

WHAT WILL I STUDY?

Destination courses are for more advanced ESOL students and consist of about 50% English and 50% vocational study. You will study English with a combination of units that include an introduction to the hair and beauty industries.

Units include: an introduction to hair and beauty treatments including basic nail and hand care, facial skin care, shampooing, conditioning, and hair styling.

NEXT STEPS:

You may wish to progress to a Level 2 Diploma in Hair or Beauty.

ENTRY REQUIREMENTS:

You do not need to have any previous qualifications, but you should be able to give reasons for wanting to work in hair or beauty. You should have a pass at ESOL Entry 3 or equivalent. You will be interviewed before you enrol on the course, and you will have a written assessment to establish your level of language skills..

BEAUTY THERAPY WITH ENGLISH SUPPORT

FREE COURSE FOR ADULTS

LEVEL 2

VTCT diploma. For those who wish to work towards a career within the hair and beauty industries whilst improving their English language skills.

STARTS: September 2024 – June 2025

FEES: £1,555.00

DAYS / TIME: Two days a week (Daytime)

LOCATION: Isleworth

DURATION: 1 year

WHAT WILL I STUDY?

You will learn through theory and practical classes (including practising all treatments on fellow students prior to working on clients), projects, role plays, case studies, work experience, competitions, and reception duties.

The clients visiting our working salons require a wide range of treatments, and you will perform all portfolio evidence assessments on external clients.

You will study facials, makeup, manicure and pedicure, tanning, depilatory waxing, stock display, salon administration, reception, anatomy and physiology, lash and brown tining, and eyebrow shaping.

NEXT STEPS:

Level 3 VTCT Diploma in Beauty Therapy or Beauty Therapy Treatments to become a fully qualified beauty therapist.

ENTRY REQUIREMENTS:

You should have a good general education. A Level 1 qualification in beauty therapy is helpful but not essential. You will need a reference and you will be required to pass an English assessment.

BEAUTY THERAPY - LASER AND IPL

ADVANCED LEARNER LOAN AVAILABLE

LEVEL 4

VTCT Certificate. This daytime intensive course allows you to study for a full certificate in laser and IPL, plus the opportunity to study extra units including epilation and advanced epilation.

STARTS: September 2024 (Daytime), January 2025 (Evening)

FEES: £885.00

DAYS / TIME: One day/evening a week

LOCATION: Isleworth

DURATION: 13 weeks

WHAT WILL I STUDY?

This qualification builds on existing knowledge and understanding of therapy skills and will develop an enhanced repertoire of technical skills.

The course includes learning how to: provide a thorough consultation with the client to formulate a specific course of treatment tailored to suit their individual needs, use laser and light treatments for skin rejuvenation and hair removal, and manage the health, safety, and security of the salon

NEXT STEPS:

When you have successfully completed this qualification, you will be in a position to aspire to promotion as an advanced beauty therapist providing laser and IPL services within a beauty salon.

ENTRY REQUIREMENTS:

Full Level 3 Beauty Therapy qualification. There are some circumstances where a Level 2 Beauty Therapy qualification may be accepted.

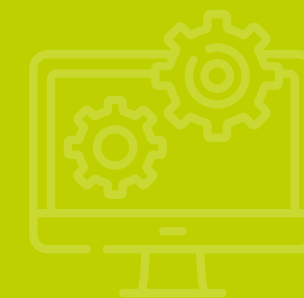
Guide to fees and funding:

These icons indicate there are concessions and funding available for students, with some courses being completely free for students!

Free Courses for Adults Advanced Learner Loan Essential Skills: English and Maths Essential Skills: Digital Skills

*Concessions are available on most of our courses, with some being free for adults. This depends on eligibility and selected criteria.

Funding is subject to qualifying criteria and selected courses at Level 3 and above.



INTRODUCTION

West Thames College Business and Administration courses have good success rates. Our teachers have industry experience and will help you progress to university and employment.

West Thames College is a certified CISCO and Microsoft Academy, giving students the chance to study a range of Computing and ICT courses at varying levels.

Students on our ICT courses benefit from our state-of-the-art ICT suites, experience interactive learning with our virtual learning environment.

KEY FACTS

- Take part in enterprise challenges and competitions
- Guest speakers, work-related projects, live briefs and competitions, e.g. WorldSkills
- Improve your English and maths alongside your course.

ESSENTIAL SKILLS: ENGLISH AND MATHS

ESOL DESTINATION BUSINESS AND IT

LEVEL 1

BTEC Award is for more advanced ESOL students who wish to improve their English while working towards a vocational qualification. This course is for students whose first language is not English and is ideal for those progressing from an ESOL 16-18 course.

STARTS: September 2024

FEES: £1,209.00 (Full cost)

DAYS / TIME: Three Days a week (Daytime)

LOCATION: Isleworth

DURATION: 1 year (Full-time)

WHAT WILL I STUDY?

Alongside an ESOL qualification you will study: Employment Rights, Responsibilities and Pay, Business Meeting Techniques, Spreadsheet Software, Database Software, Understanding Business Communication, Understanding Customer Service and Preparing for work. The IT element of the course is taught using up-to-date computers and software.

You will study:

- Managing your health
- Working in business administration
- Recording business transactions
- Planning for and taking part in a visit
- Planning for a job in Travel and Tourism.

You will also work towards Essential Digital Skills.

NEXT STEPS:

You can progress to a Level 2 course, such as the BTEC Level 2 First Extended Certificate / BTEC Level 2 Certificate in Business or Level 2 NCFE in Business Administration.

ENTRY REQUIREMENTS:

You should have a pass at ESOL Entry 3 or equivalent. You will have an assessment and an interview.

ILM LEVEL 3 DIPLOMA IN LEADERSHIP AND MANAGEMENT

BLENDED LEARNING

LEVEL 3

The Diploma in Leadership and Management is accredited by ILM. This qualification is ideal for those who have management responsibilities but no formal training and are serious about developing their abilities.

STARTS: September 2024 – June 2025

FEES: £724.00 (Full cost)

DAYS / TIME: One evening per week

LOCATION: Isleworth

DURATION: 10 months

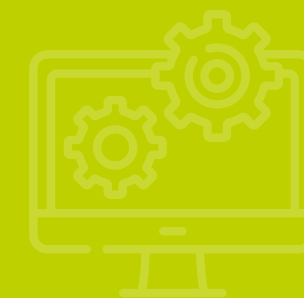
MODE: Online/Classroom

WHAT WILL I STUDY?

This flexible course is delivered in partnership with Mindful Education and combines online learning with face-to-face lessons in the classroom. The course covers a wide range of business management skills and knowledge, including organisational performance, interpersonal skills and personal effectiveness.

Courses

Name of Course	Location	Days/Times	Starts	Ends	Fees
Level 1 ESOL Destination Business and IT	Isleworth	Three Days a week (Daytime)	September 2024	September 2025	£1,209.00
Level 1 Essential Digital Skills	Isleworth	One day a week (Daytime)	September 2024 January 2025	December 2024 April 2025	£1,209.00
ILM Level 3 Diploma in Leadership and Management	Isleworth	1 evening per week	September 2024	June 2025	£724.00
Level 3 International Computer Driving License ICDL	Isleworth	Two Days a week (Daytime)	September 2024	June 2025	£615.00
Level 4 OCN Business Administration	Isleworth	Three days a week (Daytime)	September 2024	June 2025	
Entry 3 Essential Digital Skills	Isleworth	One day a week (Daytime)	January 2025	April 2025	



FREE COURSE FOR ADULTS

You will study:

- Principles of management and leadership
- Building stakeholder relationships using effective communication
- Contributing to the delivery of a project
- Managing budgets and resources
- Managing a team to achieve results
- Managing own personal and professional development
- Managing daily activities to achieve results
- Managing data and information

NEXT STEPS:

Learners who are aspiring to a management role may progress to roles such as Team Leader, Supervisor, First Line Manager, Project Officer, Shift Manager or Site Manager.

ENTRY REQUIREMENTS:

Individual employers will set the selection criteria for their apprentices though most will be expected to hold 5 GCSEs at grade 5 / C or higher. Prior experience may also be considered. Learners should also have achieved qualifications in English and mathematics at a minimum of level 2 (GCSE) or equivalent.. Learners should also have achieved qualifications in English and mathematics at a minimum of Level 2 (GCSE) or equivalent.



INTERNATIONAL COMPUTER DRIVING LICENCE (ICDL)

LEVEL 3

The International Computer Driving Licence (ICDL Core) formerly referred to as ECDL- is an internationally recognised IT qualification designed to give learners the skills to use computers confidently and effectively. The aim of the course is to help to improve your understanding and efficient use of computers and it will provide you with all you the skills you need to work in any office or administrative environment at a high level.

STARTS: September 2024 - June 2025

FEES: £615.00 (Full cost)

DAYS / TIME: Two days a week (Daytime)

LOCATION: Isleworth

DURATION: 1 year

WHAT WILL I STUDY?

The aim of the course is to help to improve your understanding and efficient use of computers and it will provide you with all you the skills you need to work in any office or administrative environment at a high level.

You will learn the following units which will provide you with the knowledge and skills required for the role as a manager or supervisor.

- IT user Fundamentals
- Using Emails and internet
- Security for IT users
- Word Processing
- Spreadsheets
- Database Software
- Presentation Software

NEXT STEPS:

On successful completion of this course you can progress to other vendor or digital qualification which can further develop your skills for the new digital age. On completion you are also eligible to apply for or discounted BCS membership (and BCS letters after your name) and you will gain 24 UCAS points which can go towards a university application.

ENTRY REQUIREMENTS:

Students should have achieved a level 2 recognised IT qualifications or currently working in an IT industry with excellent knowledge of Windows 10.

OCN LEVEL 4 BUSINESS ADMINISTRATION

LEVEL 4

This qualification enables students to develop a broad knowledge, skills and awareness of the key aspects of the business sector through studying a range of business related units.

STARTS: September 2024 - June 2025

FEES: £2,573.00 (Full cost)

DAYS / TIME: Three days a week (Daytime)

LOCATION: Isleworth

DURATION: 1 year

WHAT WILL I STUDY?

To achieve the qualifications learners are expected to achieve a number of credits based on the size of qualifications they are studying. To achieve a full certificate, learners must achieve a total of 28 credits and to achieve a full Diploma learners are expected to achieve a total of 42 credits. You will study the following units:

- Communicating in A Business
- Business Administration Systems
- Managing Self Development
- Principles of Marketing
- Human Resource Management
- Principles of Budget Management

NEXT STEPS:

On completion, of the programme, learners can also progress to full-time employment in the business sector. Learners may also wish to continue their studies to a level 5 qualification or progress to further study a different qualification at the same level.

ENTRY REQUIREMENTS:

A full level 3 qualification including GCSE maths and English at grade 4-9 or Grade A-C.

ESSENTIAL DIGITAL SKILLS

ENTRY 3

STARTS: September 2024 - January 2025

FEES:

DAYS / TIME: Three days a week (Daytime)

LOCATION: Isleworth

DURATION: 17 weeks

ESSENTIAL DIGITAL SKILLS

LEVEL 1

STARTS: September 2024 - January 2025

FEES:

DAYS / TIME: One day a week (Daytime)

LOCATION: Isleworth

DURATION: 25 weeks

Guide to fees and funding:

These icons indicate there are concessions and funding available for students, with some courses being completely free for students!

Free Courses for Adults
 Advanced Learner Loan
 Essential Skills: English and Maths
 Essential Skills: Digital Skills

*Concessions are available on most of our courses, with some being free for adults. This depends on eligibility and selected criteria.

Funding is subject to qualifying criteria and selected courses at Level 3 and above.



INTRODUCTION

Our Construction courses are based at the Skills + Logistics Centre in Feltham. The Centre is equipped with specialist workshops for all the trade skills: plumbing, painting and decorating, electrical installation and carpentry.

KEY FACTS

- Highly skilled tutors direct from the building trades
- Work on live briefs and building projects
- Lots of good job and apprenticeship opportunities in the local area
- Close links with BAA, Notting Hill Housing Association, Osborne, British Gas, K&A Construction and other local employers.

Courses

Name of Course	Location	Days/Times	Starts	Ends	Fees
CSkills Level 1 Award in Carpentry and Joinery	Skills+Logistics Centre, Feltham	Two evenings a week, or one day a week	September 2024	January 2025	£450.00
Level 1 CSkills Level 1 Certificate in Carpentry and Joinery	Skills+Logistics Centre, Feltham	Two evenings a week, or one day a week	January 2025	June 2025	£613.00
Level 1 Health & Safety Awareness in Construction (CSCS)	Skills+Logistics Centre, Feltham	One day a week (Daytime)	October 2024, February 2025, May 2025	October 2024, February 2025, May 2025	£81.00
Level 2 Carpentry and Joinery	Skills+Logistics Centre, Feltham	Two evenings a week	September 2024	June 2025	£1,118.00
Level 2 Plumbing	Skills+Logistics Centre, Feltham	Two evenings a week, or two days a week	September 2024	June 2025	£1,181.00 evening £1,096.00 daytime
Level 1 Electrical Installation	Skills+Logistics Centre, Feltham	Two evenings a week	September 2024	February 2025	£617.00
Level 2 Electrical Installation	Skills+Logistics Centre, Feltham	Two evenings a week	September 2024	June 2025	£1,181.00
Level 1 Property Maintenance Skills	Skills+Logistics Centre, Feltham	Two evenings a week	September 2024	November 2024	£234.00

FREE COURSE FOR ADULTS

AWARD IN CARPENTRY AND JOINERY

LEVEL 1

CSkills Award in Carpentry and Joinery Learn basic Carpentry and Joinery skills.

STARTS: September 2024 – January 2025

FEES: £450.00 (Full cost)

DAYS / TIME: Two evenings a week, or one day a week

DURATION: 19 weeks

WHAT WILL I STUDY?

Suitable for those with no prior experience. You will learn timber framing, flooring, roofing, door hanging, staircases, all first and second fittings, technical underpinning knowledge and health and safety requirements for the construction trade.

NEXT STEPS:

You will need to have at least Entry Level 3 in both English and maths. You will also have an interview.

ENTRY REQUIREMENTS:

Progress to the CSkills Level 1 Certificate in Carpentry and Joinery, also offered at the Feltham Skills Centre in January 2025.





FREE COURSE FOR ADULTS

CSKILLS LEVEL 1 CERTIFICATE IN CARPENTRY AND JOINERY

LEVEL 1

CSkills Level 1 Certificate in Carpentry and Joinery

STARTS: January 2025 – June 2025

FEES: £613.00 (Full cost)

DAYS / TIME: Two evenings a week, or one day a week

LOCATION: Skills+Logistics Centre, Feltham

DURATION: 19 weeks

WHAT WILL I STUDY?

This Level 1 course for adults is held in our workshops at the Skills + Logistics Centre in Feltham. It covers all aspects of carpentry and joinery alongside technical underpinning knowledge and health and safety requirements associated with the construction trade. The course provides a good basis for further study.

NEXT STEPS:

Progress to the Level 2 Carpentry and Joinery course.

ENTRY REQUIREMENTS:

You will need to have at least Entry Level 3 in both English and maths, as well as completed the Level 1 Award in Carpentry and Joinery. You will also have an interview.

FREE COURSE FOR ADULTS

HEALTH & SAFETY AWARENESS IN CONSTRUCTION (CSCS)

LEVEL 1

Award in Health and Safety in a Construction Environment.

For anyone who wishes to work in the Construction Industry and fulfil CSCS training requirements for the Labourer's card.

STARTS: October 2024, February 2025, May 2025

FEES: £81.00 (Full cost)

DAYS / TIME: One day a week (Daytime)

LOCATION: Skills+Logistics Centre, Feltham

DURATION: 2 weeks

WHAT WILL I STUDY?

Learners will study the following units: the principles of risk assessment for maintaining and improving health and safety at work, the importance of safe manual handling in the workplace, the importance of working safely at height in the workplace, risks to health within a construction environment, the importance of working around plant and equipment safely.

NEXT STEPS:

Enhance skills for further study in chosen vocational area or employment.

ENTRY REQUIREMENTS:

There are no formal entry requirements to take this qualification. This qualification can be undertaken without any previous training or qualifications in this subject area.

FREE COURSE FOR ADULTS

CARPENTRY AND JOINERY

LEVEL 2

CSkills Award in Site Carpentry.

This course covers all aspects of carpentry and joinery alongside technical underpinning knowledge. Ideal for adults who are already working, or wishing to work, as a carpenter.

STARTS: September 2024 – June 2025

FEES: £1,118.00 (Full cost)

DAYS / TIME: Two evenings a week

LOCATION: Skills+Logistics Centre, Feltham

DURATION: 1 Year

WHAT WILL I STUDY?

Timber framing, flooring, roofing, door hanging, staircases, all first and second fittings, technical underpinning knowledge and health and safety requirements for the construction trade.

NEXT STEPS:

Progress to Level 3 Site Carpentry, an Advanced Apprenticeship, or find employment as a carpenter/joiner.

ENTRY REQUIREMENTS:

Ideally, you will already have a relevant Level 1 qualification in Carpentry or relevant work experience in this field. You should also have GCSEs in Maths and English at grade D/3 or above. There will be an assessment to make sure the course is right for you.

FREE COURSE FOR ADULTS

PLUMBING STUDIES

LEVEL 1

QCF Diploma

This course is designed to develop plumbing skills and an understanding of health and safety requirements. It is an excellent introduction for anyone who wants to go on to further training or employment in the building services sector. You will work towards a nationally recognised qualification while gaining skills and knowledge in practical and theory sessions.

STARTS: September 2024 – June 2025

FEES: £1,181.00 (Full cost, evening)

£1,096.00 (Full cost, daytime)

DAYS / TIME: Two evenings a week

LOCATION: Skills+Logistics Centre, Feltham

DURATION: 1 year

WHAT WILL I STUDY?

Practical plumbing skills, theory of plumbing trade activities and health and safety.

NEXT STEPS:

When you have completed this course you can progress to the Level 1 Certificate in Introduction to Plumbing Skills.

ENTRY REQUIREMENTS:

There are no entry requirements, but there will be an initial assessment.

Guide to fees and funding:

These icons indicate there are concessions and funding available for students, with some courses being completely free for students!

Free Courses for Adults
 Advanced Learner Loan
 Essential Skills: English and Maths
 Essential Skills: Digital Skills

*Concessions are available on most of our courses, with some being free for adults. This depends on eligibility and selected criteria.

Funding is subject to qualifying criteria and selected courses at Level 3 and above.



FREE COURSE FOR ADULTS

PLUMBING

LEVEL 2

City & Guilds Diploma.
This course is for students who are interested in a career as a plumber and covers domestic pipework used in plumbing, hot and cold water, central heating pipework, electrical safety, environmental awareness and health and safety in the workplace.

STARTS: September 2024

FEES: £1,181.00 (Evening, Full cost)
£1,096.00 (Day time, Full cost)

DAYS / TIME: Two evenings a week, or two days a week

LOCATION: Skills+Logistics Centre, Feltham

DURATION: 1 year

WHAT WILL I STUDY?

The domestic pipework used in plumbing, hot and cold water, electrical safety, environmental awareness, and health and safety in the workplace.

NEXT STEPS:

Learners can progress to further study at Level 3 or employment in plumbing.

ENTRY REQUIREMENTS:

At least 2 GCSEs at grade D/3 or above or successful completion of the Level 1 Diploma or a relevant foundation course with functional skills in English and Maths. There will be an initial assessment

FREE COURSE FOR ADULTS

ELECTRICAL INSTALLATION

LEVEL 1

City & Guilds Level 1 Award Construction Skills (Electrical).
These qualifications are for candidates wishing to gain some understanding and some practical experience of Electrical Installation.

STARTS: September 2024

FEES: £617.00 (Full cost)

DAYS / TIME: Two evenings a week

LOCATION: Skills+Logistics Centre, Feltham

DURATION: 21 Weeks

WHAT WILL I STUDY?

Learners will gain an insight into the core activities within electrical installation operations which include wiring and terminals.

NEXT STEPS:

Learners can progress to further study at Level 1 or Level 2.

ENTRY REQUIREMENTS:

There are no formal entry requirements for this qualification and learners are not expected to have any prior knowledge or experience, however an interest in the subject area is advisable.

FREE COURSE FOR ADULTS

ELECTRICAL INSTALLATION

CITY & GUILDS LEVEL 2 DIPLOMA IN ELECTRICAL INSTALLATION (BUILDING AND STRUCTURES)

This course includes theory and practice and is designed as a starting point for those seeking to become trained electricians.

STARTS: September 2024

FEES: £1,181.00 (Full cost)

DAYS / TIME: Two evenings a week

LOCATION: Skills+Logistics Centre, Feltham

DURATION: 1 year

WHAT WILL I STUDY?

- Principles of electrical systems
- Electrical installation technology
- Health and safety
- Installation of wiring systems.

NEXT STEPS:

This course provides a good foundation to progress to the City and Guilds Level 3 Certificate or an advanced apprenticeship. To gain the full electrician certificate you will have 4 years of industrial experience in electrical installations and have obtained the Level 2 and Level 3 technical certificates or an NVQ Level 3.

ENTRY REQUIREMENTS:

At least 2 GCSEs at grade D / grade 3 or above or successful completion of the Level 1 Diploma or a relevant foundation course with functional skills in English and maths. You will have an assessment.

FREE COURSE FOR ADULTS

PROPERTY MAINTENANCE SKILLS

LEVEL 1

Award and Certificate in Construction Skills.
These qualifications are designed for those seeking an introductory route into the construction industry. They can be used to introduce learners to the initial skills and knowledge needed to enter the construction sector and will provide learners with the basic skills and knowledge and understanding required by the construction industry.

STARTS: September 2024

FEES: £234.00 (Full cost)

DAYS / TIME: Two evenings a week

LOCATION: Skills+Logistics Centre, Feltham

DURATION: 6 weeks

WHAT WILL I STUDY?

Initial skills, knowledge and understanding required to enter the construction sector and meet the requirements of the industry.

NEXT STEPS:

The qualification will lead to progression onto a range of job opportunities with the construction sector.

ENTRY REQUIREMENTS:

There are no formal entry requirements to take this qualification.

Guide to fees and funding:

These icons indicate there are concessions and funding available for students, with some courses being completely free for students!

38 Free Courses for Adults Advanced Learner Loan Essential Skills: English and Maths Essential Skills: Digital Skills

*Concessions are available on most of our courses, with some being free for adults. This depends on eligibility and selected criteria.

Funding is subject to qualifying criteria and selected courses at Level 3 and above.



INTRODUCTION

English & Maths courses are essential for your career development, with most careers requiring these qualifications upon interview. Did you know that these courses could be FREE depending on your circumstances?

If you are looking to improve your skills, gain a qualification for work, or become more confident in your ability, then we have a range of courses for you. We offer courses in the day, and the evening, that are flexible to work around your schedule.

ESSENTIAL SKILLS: ENGLISH AND MATHS

Courses

Name of Course	Location	Days/Times	Starts	Ends
Level 1 English for Work and Study	Isleworth	Daytime and Evening Semester 1: 21 weeks Semester 2: 15 weeks	September 2024 November 2024 February 2025	February 2024 June 2025 June 2025
Level 2 GCSE English	Isleworth	1 day per week (3 hours), 1 evening per week (3 hours) 1 year, or 19 weeks (intensive)	September 2024 or January 2025	June 2025
Level 1 Extended Award in English Skills	Isleworth	One day a week	September 2024 - February 2025 February 2025 - June 2025	June 2025
Entry Level to Level 1 Maths for Work and Study	Isleworth	Daytime and Evening Semester 1: 21 weeks Semester 2: 15 weeks	September 2024 November 2024 February 2025	February 2025 June 2025 June 2025
Level 2 GCSE Maths	Isleworth	1 day per week (3 hours), 1 evening per week (3 hours) 1 year, or 19 weeks (intensive)	September 2024 or January 2025	June 2025
Entry Level to Level 1 Free Maths Courses for Adults	Isleworth	One day a week	Please enquire	Please enquire

ENGLISH FOR WORK AND STUDY

ENTRY LEVEL TO LEVEL 1

NCFE Functional Skills English & Pearson Essential Digital Skills Qualification. For students who wish to improve their English and digital literacy, build confidence, and enhance their employability prospects.

STARTS: September 2024 or February 2025

FEES: Please visit west-thames.ac.uk/fees-policy or contact 020 8326 2000 for more information.

DAYS / TIME: 1 or 2 days or evenings per week (4 hours for entry Level, 6 hours for Level 1)

LOCATION: Isleworth

DURATION: Semester 1: 21 weeks
Semester 2: 15 weeks

WHAT WILL I STUDY?

Writing, reading, speaking and listening skills. 1 hour of Essential Digital Skills is included as part of the daytime entry & Level 1 courses.

NEXT STEPS:

A higher level course or employment.

ENTRY REQUIREMENTS:

You will have an initial assessment to determine your suitability for the course and so that you can be placed in an appropriate group according to your needs and correct level.



Guide to fees and funding:

These icons indicate there are concessions and funding available for students, with some courses being completely free for students!

40 Free Courses for Adults Advanced Learner Loan Essential Skills: English and Maths Essential Skills: Digital Skills

*Concessions are available on most of our courses, with some being free for adults. This depends on eligibility and selected criteria.

Funding is subject to qualifying criteria and selected courses at Level 3 and above.



ESSENTIAL SKILLS: ENGLISH AND MATHS

GCSE ENGLISH

LEVEL 2

AQA GCSE in English Language. For those aged 19+ who do not have a A*-C/9-4 in English Language and wish to gain a GCSE qualification.

STARTS: September 2024 or January 2025 (Intensive 19 Weeks)

FEES: Please visit west-thames.ac.uk/fees-policy or contact 020 8326 2000 for more information.

DAYS / TIME: 1 day per week (3 hours), 1 evening per week (3 hours)

LOCATION: Isleworth

DURATION: 1 year, or 19 weeks (intensive)

WHAT WILL I STUDY?

Learners will explore creative reading and writing, understand and produce non-fiction texts, explore writers' viewpoints and perspectives and develop spoken language skills.

NEXT STEPS:

A higher level course or employment.

ENTRY REQUIREMENTS:

Grade 3 in GCSE English or a Level 1 or 2 Functional Skills English qualification. If you do not have these qualifications, you will sit an initial assessment to check if this course is right for you.

ESSENTIAL SKILLS: ENGLISH AND MATHS

EXTENDED AWARD IN ENGLISH SKILLS

LEVEL 1

Ascentis.

For those aged 19+ who have achieved an Entry Level Functional Skills qualification and are preparing for Level 1. This is a stepping stone qualification to Functional Skills Level 1.

STARTS: September 2024, February 2025

FEES: Please visit west-thames.ac.uk/fees-policy or contact 020 8326 2000 for more information.

DAYS / TIME: 1 day per week - 3 hours per week 1 evening - 3 hours per week (February)

LOCATION: Isleworth

DURATION: Semester 1: 21 week

Semester 2: 15 weeks

WHAT WILL I STUDY?

Learners will develop their reading, writing, spelling, punctuation, and grammar skills.

They will improve their English skills to undertake a full Functional Skills Level 1 qualification in English.

NEXT STEPS:

You will improve your employment prospects or you can even apply for higher level English courses.

ENTRY REQUIREMENTS:

Entry Level Functional Skills/ ESOL. If you do not have these qualifications, you will sit an initial assessment to check if this course is right for you.

ESSENTIAL SKILLS: ENGLISH AND MATHS

MATHS FOR WORK AND STUDY

ENTRY LEVEL TO LEVEL 1

City & Guilds Functional Skills Maths.

This course is designed for adults who want to improve their maths skills, build their confidence and enhance employability skills. This course is free (fully-funded) for adults with the right to remain in the UK. We offer 4 levels from Entry Level (for absolute beginners) to Level 1.

At Entry level you will study 1 day per week (3 hours) for approximately 21 weeks.

At Level 1, you will study 2 days per week (5 hours) for approximately 21 weeks.

STARTS: September 2024, November 2024 and February 2025

FEES: Please visit west-thames.ac.uk/fees-policy or contact 020 8326 2000 for more information.

DAYS / TIME: Daytime and Evening (September/February)

LOCATION: Isleworth

DURATION: Semester 1: 21 weeks

Semester 2: 15 weeks

WHAT WILL I STUDY?

You will study:

- Number
- Shape and space
- Measures
- Data

Our tutors are supportive, friendly and experienced and will work with you to help you reach your goals.

NEXT STEPS:

A higher level course or employment.

ENTRY REQUIREMENTS:

You will have an initial assessment to determine your suitability for the course and so that you can be placed in an appropriate group according to your needs.

ESSENTIAL SKILLS: ENGLISH AND MATHS

GCSE MATHS

LEVEL 2

Edexcel GCSE in Mathematics.

For those aged 19+ who do not have a 9 -4/A*-C in Maths and wish to gain a GCSE qualification.

STARTS: September 2024 or January 2025 (Intensive)

FEES: Please visit west-thames.ac.uk/fees-policy or contact 020 8326 2000 for more information.

DAYS / TIME: 1 day per week (3 hours), 1 evening per week (3 hours). Intensive course is 2 days per week - 5 hours per week

LOCATION: Isleworth

DURATION: 33 weeks

WHAT WILL I STUDY?

Numbers, algebra, geometry, measures, statistics, and probability. You will develop your confidence and a positive attitude towards maths and learn to make informed decisions about technology, money management, further learning opportunities and career choices.

NEXT STEPS:

Your GCSE qualification will improve your employment prospects and help you apply to university and higher-level courses.

ENTRY REQUIREMENTS:

Grade 3 in GCSE Maths. If you do not have this qualification you will sit an initial assessment to check if this course is right for you.

Guide to fees and funding:

These icons indicate there are concessions and funding available for students, with some courses being completely free for students!

Free Courses for Adults
 Advanced Learner Loan
 Essential Skills: English and Maths
 Essential Skills: Digital Skills

*Concessions are available on most of our courses, with some being free for adults. This depends on eligibility and selected criteria.

Funding is subject to qualifying criteria and selected courses at Level 3 and above.



FREE MATHS COURSES FOR ADULTS

You must be eligible for the following criteria to take a free Multiply maths course:

- Be London resident aged 19+
- Not have a GCSE in maths at grade C (equivalent to grade 4), or an equivalent qualification
- Show evidence of 3 years of residency in the UK

MAYOR OF LONDON



GREATER LONDON AUTHORITY

ESSENTIAL SKILLS: ENGLISH AND MATHS

STEP UP TO LEVEL 1 FUNCTIONAL SKILLS MATHS/PRE GCSE-MATHS PRE-GCSE LEVEL

STARTS: Please enquire
FEES: FREE - Multiply courses are funded by the government.
DAYS / TIME: 1 day per week – 3 hours
LOCATION: Isleworth
DURATION: 10 weeks

WHAT WILL I STUDY?

This course is designed to prepare you for Level 1 Functional Skills/or GCSE Maths Course. You will develop numeracy skills and build mathematical resilience. You will learn two modules- Number and Algebra which cover key mathematical concepts and techniques providing a direct pathway towards a GCSE Maths course.

NEXT STEPS:

You will improve your employment prospects and help you apply for higher level Maths courses.

ESSENTIAL SKILLS: ENGLISH AND MATHS

SUPPORTING LEARNING AT HOME

ENTRY LEVEL TO LEVEL 1

STARTS: Please enquire
FEES: FREE - Multiply courses are funded by the government.
DAYS / TIME: 1 day per week – 2 hours
LOCATION: Isleworth
DURATION: 6 weeks

WHAT WILL I STUDY?

Do you want to help your child when they are stuck on their Maths homework? This course is designed for adults who wish to become more involved in their children's learning and to support their children's mathematical progression.

NEXT STEPS:

Further courses in maths.

ENTRY REQUIREMENTS:

You will sit an initial assessment to check if this course is right for you.

MANAGING PERSONAL FINANCES

ENTRY LEVEL TO LEVEL 1

STARTS: Please enquire
FEES: FREE - Multiply courses are funded by the government.
DAYS / TIME: 1 day per week – 3 hours
LOCATION: Isleworth
DURATION: 5 Weeks

WHAT WILL I STUDY?

Are you moving into your own home for the first time or struggling with the rising cost of living? You will learn how to manage your money and how to have more control over your finances. You will develop the skills, knowledge, and attitudes you need to manage your money. You learn how to make a budget, monitor your bank account, and cut back on your spending.

NEXT STEPS:

Further courses in maths.

ENTRY REQUIREMENTS:

This course is designed for care leavers aged between 19-21, to build confidence in managing finances.

MAYOR OF LONDON



GREATER LONDON AUTHORITY

UNLOCK YOUR POTENTIAL: MATHS FOR PROMOTION

LEVEL 1

STARTS: Please enquire
FEES: FREE - Multiply courses are funded by the government.
DAYS / TIME: 1 day per week – 3 hours
LOCATION: Isleworth
DURATION: 6 weeks

WHAT WILL I STUDY?

Are you looking to obtain a promotion or change jobs? This course will equip you with the mathematical knowledge and the analytical thinking skills that employers are looking for.

You will build your knowledge of basic statistics, probability, and data analysis. You will also learn how use Excel to store, organise, and track data sets with formulas and functions.

NEXT STEPS:

Further courses in maths.

ENTRY REQUIREMENTS:

You will sit an initial assessment to check if this course is right for you.

MAYOR OF LONDON



GREATER LONDON AUTHORITY

Guide to fees and funding:

These icons indicate there are concessions and funding available for students, with some courses being completely free for students!

Free Courses for Adults Advanced Learner Loan Essential Skills: English and Maths Essential Skills: Digital Skills

*Concessions are available on most of our courses, with some being free for adults. This depends on eligibility and selected criteria.

Funding is subject to qualifying criteria and selected courses at Level 3 and above.



INTRODUCTION

ESOL courses are designed for anyone whose first language is not English and who wishes to learn how to speak English, progress to other courses, or to get a job. If you're looking for English courses for beginners, we'll interview you to find out which class is best for you.

Our supportive teachers will help build your confidence and develop the skills you need to live and work in the UK. On our Skills for Life courses, you'll have termly exams to help you to progress quickly and gain nationally recognised qualifications.

KEY FACTS

- Flexible courses at all levels – for young people and adults
- Trips to places of cultural interest such as London museums and tourist attractions
- Students go on to study GCSEs or vocational courses.

These courses contribute towards the Citizenship Skills for Life certificate

ESSENTIAL SKILLS: ENGLISH AND MATHS

ESOL (ENGLISH FOR SPEAKERS OF OTHER LANGUAGES)

ESOL ENTRY LEVEL - LEVEL 1

This course is for UK residents, economic migrants, asylum seekers and refugees who wish to learn English. West Thames College offers ESOL courses for adult learners from beginners Entry Level to Level 1 equivalent to GCSE grade D. We will interview you and give you an initial assessment to find out which level is right for you. We provide exam courses which cover speaking, listening, reading and writing. E3 and Level 1 courses are recognised by the Study, Work and Life in the UK programme.

The courses include a variety of topics including citizenship and employability skills. Courses take place daytime or evening and are for either 10, 5.5 or 5 hours per week.

STARTS: September 2024, January 2025

FEES: Please visit west-thames.ac.uk/fees-policy or contact 020 8326 2000 for more information.

DAYS / TIME: Two days a week, or two evenings a week

LOCATION: Isleworth

DURATION: 21 weeks or 36 weeks

WHAT WILL I STUDY?

English at a level that is right for you, including speaking, listening, reading and writing skills. You will also be able to develop employability skills, which will prepare you for work. You will also learn maths and digital skills.

NEXT STEPS:

You may go on to another course or find employment or voluntary work. We will give you advice about further training and work opportunities.

ENTRY REQUIREMENTS:

You will have an assessment to make sure you are placed in the right class.

ESSENTIAL SKILLS: ENGLISH AND MATHS

ESOL DESTINATION COURSES

LEVEL 1

Vocational Qualifications and Ascentis ESOL Skills for Life Destination courses are for more advanced ESOL students who wish to improve their English while working towards a vocational qualification.

FEES: Please visit west-thames.ac.uk/fees-policy or contact 020 8326 2000 for more information.

STARTS: September 2024

DAYS / TIME: 3 days per week

LOCATION: Isleworth

DURATION: 1 year

WHAT WILL I STUDY?

Destination courses consist of 5 hours per week of English and 4 hours per week vocational study at Level 1.

NEXT STEPS:

Level 2 qualification or employment

ENTRY REQUIREMENTS:

You should have a pass at ESOL Entry 3 or equivalent. You will have an interview and an assessment.

CHOOSE FROM THE FOLLOWING COURSES:

- ESOL Destination Business and IT
- ESOL Destination Health and Social Care and Childcare
- ESOL Destination Hair and Beauty

Courses

Name of Course	Location	Days/Times	Starts	Ends
Entry Level - Level 1 ESOL Entry Level - Level 2	Isleworth	Two days a week, or two evenings a week	September 2024, January 2025	June 2025
Level 1 ESOL Destination Courses	Isleworth	3 days per week	September 2024	June 2025

Guide to fees and funding:

These icons indicate there are concessions and funding available for students, with some courses being completely free for students!

Free Courses for Adults
 Advanced Learner Loan
 Essential Skills: English and Maths
 Essential Skills: Digital Skills

*Concessions are available on most of our courses, with some being free for adults. This depends on eligibility and selected criteria.

Funding is subject to qualifying criteria and selected courses at Level 3 and above.



INTRODUCTION

We offer full time, part time, or day release hairdressing and beauty courses, as well as apprenticeships in hairdressing. Our hair courses achieve high success rates and are staffed by teachers with extensive professional experience.

On your hairdresser course you'll train in our professional hair salons, which are open to the public, and take part in industry visits and exhibitions in the UK and overseas. After your hairdressing course, you'll be confident, qualified and job ready.

KEY FACTS

- Our students take part in and often win national competitions
- Links with L'Oreal ensure that our students use the best products
- We've hosted WorldSkills UK competitions in our outstanding facilities
- Specialist barbering courses also available.

FREE COURSE FOR ADULTS

HAIRDRESSING

LEVEL 1

City & Guilds Level 1 Certificate
For adults with no previous experience who wish to learn hairdressing skills and gain a qualification.

STARTS: September 2024 - June 2025

FEES: £674.00 (Full cost)

DAYS / TIME: One evening a week

LOCATION: Isleworth

DURATION: 30 weeks

WHAT WILL I STUDY?

You will learn how to shampoo and blow dry and assist stylists at Level 2.

NEXT STEPS:

You may wish to go on to a Level 2 Hairdressing course.

ENTRY REQUIREMENTS:

None, but you will have an interview before you enrol to ensure that the course is right for you.

Courses

Name of Course	Location	Days/Times	Starts	Ends	Fees
Level 1 Hairdressing	Isleworth	1 evening per week	September 2024	June 2025	£674.00
Level 2 Hairdressing	Isleworth	Two evenings a week	September 2024	June 2025	£1,316.00
Level 2 Barbering	Isleworth	One day a week	September 2024	June 2025	£1,350.00
Level 2 Intensive Hairdressing	Isleworth	One day a week	September 2024	June 2025	£1,350.00
Level 3 Intensive Hairdressing	Isleworth	One day a week	September 2024	June 2025	£1,231.00
Level 3 Bridal Hairstyling	Isleworth	One evening a week	January 2025	June 2025	
Level 1 Destination Hair and Beauty with English Language	Isleworth	Two days per week	September 2024	June 2025	£1,217.00





FREE COURSE FOR ADULTS

HAIRDRESSING

LEVEL 2

VTCT Qualification. This evening course covers all aspects of European ladies' hairdressing.

STARTS: September 2024
FEES: £1,316.00 (Full cost)
DAYS / TIME: Two evenings a week
LOCATION: Isleworth
DURATION: 1 year

WHAT WILL I STUDY?

You will cover all aspects of European ladies' hairdressing, learning practical skills enhanced by theoretical knowledge. The structured and flexible programme enables you to progress and achieve a recognised qualification. The teaching classes include practical workshops and theory, portfolio assignments, and tutorial for assessment feedback on your programme.

You will study:

- Advise and consult with clients
- Shampoo and condition hair and scalp
- Style hair using drying and setting techniques
- Cut hair using basic techniques
- Perm and neutralise hair
- Change hair colour using basic techniques
- Promote additional products or services to clients
- Develop and maintain effective teamwork and relationships
- Support health, safety and security of the environment.

NEXT STEPS:

Level 3 Apprenticeship (with more work experience) or specialist units at Level 2.

ENTRY REQUIREMENTS:

You must be working in a hairdressing salon. Commitment to attendance is essential. Previous learning will be taken into account. You will have an initial assessment and must have Level 1 minimum diagnostic.

FREE COURSE FOR ADULTS

BARBERING

LEVEL 2

VRQ Diploma in Barbering. This course covers all aspects of barbering, learning practical skills in our professional salons enhanced by theoretical knowledge.

STARTS: September 2024 – June 2025
FEES: £1,350.00 (Full cost)
DAYS / TIME: One day a week
LOCATION: Isleworth
DURATION: 1 year

WHAT WILL I STUDY?

Health and safety, consultation, shampoo and condition the hair and scalp, cut hair using basic barbering techniques, cut facial hair and create an image-based theme within the hair sector.

NEXT STEPS:

If you are a fully qualified hairdresser you could progress to a Level 3 hairdressing course. An experienced hairdresser could gain Level 2 qualification in hairdressing. Or you can progress in a career in the barbering industry.

ENTRY REQUIREMENTS:

Acceptance for the course is by interview.

FREE COURSE FOR ADULTS

INTENSIVE HAIRDRESSING

LEVEL 2

City & Guilds VRQ Diploma in Hairdressing. For adults who wish to learn all aspects of European ladies' hairdressing.

STARTS: September 2024 – June 2025
FEES: £1,350.00 (Full cost)
DAYS / TIME: One day per week
LOCATION: Isleworth
DURATION: 1 year

WHAT WILL I STUDY?

You will cover all aspects of European ladies' hairdressing, learning practical skills enhanced by theoretical knowledge. The structured and flexible programme enables you to progress and achieve a recognised qualification.

The teaching classes include:

- Practical workshops and theory
- Portfolio assignments
- Special features - trips, exhibitions, competitions (internal and external)
- Work placement/experience
- Assessment feedback on your programme.

You will study:

- Health and safety in the salon
- Client consultation for hair services
- Shampoo and condition hair and scalp
- Promote products and services to clients in a salon
- Cut women's hair
- Cut men's hair
- The art of dressing hair
- Colour and lighten hair
- Perm and neutralise hair
- Create an image based on a theme within the hair and beauty sector.

NEXT STEPS:

Level 3 in Hairdressing or specialist units at Level 2.

ENTRY REQUIREMENTS:

You do not need any formal qualifications, but you must have some work experience involving dealing with the public. Good written and oral communication skills are essential. Acceptance for the course is by interview.

INTENSIVE HAIRDRESSING

LEVEL 3

City & Guilds VRQ Diploma. In this part-time course you will develop and enhance your creative hairdressing skills and techniques, maintain and improve services to the client, and learn how to contribute to the financial effectiveness of the business.

STARTS: September 2024 – June 2025
FEES: £1,231.00 (Full cost)
DAYS / TIME: One day a week
LOCATION: Isleworth
DURATION: 1 year

WHAT WILL I STUDY?

Ensuring your own actions reduce risks to health and safety, promoting additional products or services to clients, providing hairdressing consultation services, creating a variety of looks using a combination of cutting techniques.

NEXT STEPS:

You can progress your career in salon management or take teacher training or Assessor awards.

ENTRY REQUIREMENTS:

You must have Level 2 in Hairdressing or equivalent and be working as a hairdresser in a salon.

FREE COURSE FOR ADULTS

BRIDAL HAIRSTYLING

LEVEL 3

VTCT Level 3 Award in Bridal Hairstyling. The VTCT Level 3 Award in Bridal Hairstyling is a qualification that has been specifically designed to develop your practical skills to an advanced level through the creative skill of bridal hairstyling.

STARTS: January 2025 – June 2025

FEES: Please visit west-thames.ac.uk/fees-policy or contact 020 8326 2000 for more information.

DAYS / TIME: One evening a week

LOCATION: Isleworth

DURATION: 6 months

WHAT WILL I STUDY?

The purpose of this qualification is to develop your practical skills to an advanced level of occupational ability to enable you to perform your own salon services as well as support others. Underpinning this qualification you will develop a sound knowledge of monitoring health and safety whilst working in the hairdressing industry.

NEXT STEPS:

You may wish to progress to further enhance your practical experience or set up your own business.

ENTRY REQUIREMENTS:

None.

DESTINATION HAIR AND BEAUTY WITH ENGLISH LANGUAGE

LEVEL 1

VTCT Award. For those who wish to work towards a career within the hair and beauty industries whilst improving their English language skills.

STARTS: September 2024 – June 2025

FEES: £1,217.00 (Full cost)

DAYS / TIME: Two days a week (Daytime)

LOCATION: Isleworth

DURATION: 1 year

WHAT WILL I STUDY?

Destination courses are for more advanced ESOL students and consist of about 50% English and 50% vocational study. You will study English with a combination of units that include an introduction to the hair and beauty industries.

Units include: an introduction to hair and beauty treatments including basic nail and hand care, facial skin care, shampooing, conditioning, and hair styling.

NEXT STEPS:

You may wish to progress to a Level 2 Diploma in Hair or Beauty.

ENTRY REQUIREMENTS:

You do not need to have any previous qualifications, but you should be able to give reasons for wanting to work in hair or beauty. You should have a pass at ESOL Entry 3 or equivalent. You will be interviewed before you enrol on the course, and you will have a written assessment to establish your level of language skills.



Guide to fees and funding:

These icons indicate there are concessions and funding available for students, with some courses being completely free for students!

 Free Courses for Adults
  Advanced Learner Loan
  Essential Skills: English and Maths
  Essential Skills: Digital Skills

*Concessions are available on most of our courses, with some being free for adults. This depends on eligibility and selected criteria.

Funding is subject to qualifying criteria and selected courses at Level 3 and above.



FREE COURSE FOR ADULTS

FREE COURSE FOR ADULTS

INTRODUCTION

Looking for a career in Health and Care? West Thames College offers a variety of Health and Care courses, which can lead to careers ranging from counselling to nursing.

You'll learn from teachers with professional industry experience, as well as guest speakers and lecturers. Our Health and Social Care courses have high success and progression rates.

Our Access to Nursing course is run in partnership with OCN London.



KEY FACTS

- Work placements with local care homes, nurseries, hospitals and schools
- Strong links with Kingston University
- Wide range of teaching methods used
- Good links with employment agencies
- Gain professional qualifications as you work

Courses

Name of Course	Location	Days/Times	Starts	Ends	Fees
Level 1 Esol Destination Health and Social Care and Childcare	Isleworth	Two days a week	September 2024	June 2025	£1,227.00
Level 2 Preparing to Work in Adult Social Care	Isleworth	Two days a week	September 2024	June 2025	£1,030.00
Level 3 Certificate in Mental Health	Isleworth	Two days a week	December 2024	May 2025	
Level 3 Award in Dementia Awareness	Isleworth	Two days a week	September 2024	June 2025	£457.00
Level 3 Access to Nursing	Isleworth	Tuesdays and Thursdays	September 2024	June 2025	£5,040.00

ESOL DESTINATION HEALTH AND SOCIAL CARE AND CHILDCARE

LEVEL 1

Award in Health and Social Care. Destination courses are for more advanced ESOL students and consist of about 60% English and 40% vocational study. You will study English with a combination of units that cover Health and Social Care and Childcare at Level 1.

STARTS: September 2024 – June 2025

FEES: £1,227.00 (Full cost)

DAYS / TIME: Two days a week

LOCATION: Isleworth

DURATION: 1 year

WHAT WILL I STUDY?

The course covers both health and care childcare units and may include personal care, promoting healthy eating and living, the care needs of children, learning and creative activities, self-assessment, and positive attitudes and behaviour at work.

There will also be a work experience placement (subject to availability) and visits to care centres.

NEXT STEPS:

A Level 2 qualification or apprenticeship in health and social care or childcare.

ENTRY REQUIREMENTS:

You do not need any previous qualifications in health and social care or childcare but should have ESOL Entry 3 or equivalent. You will also need have an interview and assessment and will need to complete a DBS check.

PREPARING TO WORK IN ADULT SOCIAL CARE

LEVEL 2

NCFE CACHE Level 2 Certificate in Preparing to Work in Adult Social Care. An ideal taster for those who may be new to the sector or new to the world of work. It is accessible to learners of all ages who may want to understand more about working in health and social care. It aims to introduce some basic concepts of caring and preparation for employment in the sector.

STARTS: September 2024 – June 2025

FEES: £1,030.00 (Full cost)

DAYS / TIME: Two days a week

LOCATION: Isleworth

DURATION: 1 year

WHAT WILL I STUDY?

You will study the areas of communication, equality, diversity and inclusion, personal development, role of the social care worker, handling information, health and safety, safeguarding, duty of care and person-centred approaches.

NEXT STEPS:

Level 3 Award in Awareness of Dementia or Level 3 Understanding Mental Health at the College.

ENTRY REQUIREMENTS:

You must have a Level 1 qualification or suitable experience in a health setting.



ADVANCED
LEARNER
LOAN
AVAILABLE

AWARD IN DEMENTIA AWARENESS

LEVEL 3

A qualification in Dementia Care is a requirement for any person wishing to work in a dementia care setting. The course will develop your knowledge and awareness of dementia for those working in social care settings.

FEES: £457.00 (Full cost)

STARTS: September 2024 – November 2025

DAYS / TIME: Two days a week

LOCATION: Isleworth

DURATION: 21 Weeks

WHAT WILL I STUDY?

You will develop an understanding and awareness of the causes and symptoms of dementia. After completion of the course you may progress into employment or further studies.

- The process and experience of dementia
- The administration of medication to individuals with dementia using a person-centred approach
- The role of communication and interactions with individuals who have dementia
- The diversity of individuals with dementia and the importance of inclusion

NEXT STEPS:

After completing this course you can progress to further study or employment. Progression to The Level 3 Certificate in Mental Health is offered at the College.

ENTRY REQUIREMENTS:

Level 2 in English/literacy or assessed at Level 2. If you do not currently hold a level 2 English qualification, you will be required to complete an initial assessment to ensure your suitability to complete this course.

CERTIFICATE IN MENTAL HEALTH

LEVEL 3

This course is designed to increase learners' knowledge and understanding of mental health and mental well-being. By completing this course, you will develop in-depth knowledge and understanding of mental health. It will also support progression into relevant employment within the health and social care sector..

FEES: Please visit west-thames.ac.uk/fees-policy or contact 020 8326 2000 for more information.

STARTS: December 2024-May 2025

DAYS / TIME: Two days a week

LOCATION: Isleworth

DURATION: 21 Weeks

WHAT WILL I STUDY?

You will explore and understand:

- Mental health legislation, services and public attitudes and how these have evolved
- How to support mental well-being through various stages of life
- The skills required to work in a mental health service
- Mental ill-health, treatment options available and the potential consequences of mental ill-health

NEXT STEPS:

Upon successful completion of the course, you could progress to employment or further studies

ENTRY REQUIREMENTS:

Level 2 English or assessed at Level 2. If you do not have a level 2 qualification in English, you will need to complete an initial assessment to ensure suitability for the course. A suitable level 2 qualification in Health and social care.

ACCESS TO NURSING

LEVEL 3

The Level 3 Access to HE Diploma (Nursing) is a nationally recognised qualification regulated by the Quality Assurance Agency for Higher Education (QAA) which is designed to provide preparation for study in higher education (HE) in the UK for adults returning to education. This course is a one-year courses designed for mature students (aged 19+) who want to gain the study skills and academic knowledge required for university-level study to pursue a career in nursing or related profession.

FEES: £5,040.00 (Full cost)

STARTS: September 2024 – June 2025

DAYS / TIME: Tuesdays and Thursdays

LOCATION: Isleworth

DURATION: 1 year (Full time)

WHAT WILL I STUDY?

The course content covers Biology, Sociology, Nursing studies and Study skills.

The course is taught by tutors who have experience with and are understanding of the needs of people returning to study after a long break.

You will study:

- The role of the Health or Social Care professional
- Essay Writing
- Reading and comprehension of texts

- Arithmetic Skills for Health studies Human Biology
- Anatomy and Physiology
- Cells
- Disease and immunity
- Homeostasis and controlling factors in the body
- The cardiovascular system
- Nursing studies
- Communication Skills in a Professional Setting
- Ethical Dilemmas
- Health Promotion and Health Education
- Extended Project Sociology
- Sociology of health Study skills
- Preparation for HE
- Examination skills

NEXT STEPS:

You may progress to a degree programme related to Nursing. These may include-Adult Nursing, Biological Sciences, Child Nursing, Health and Social Care, Health Promotion and Public Health, Learning Disabilities Nursing, Mental Health Nursing, Midwifery, Occupational Therapy, Public Health and a wide range of combined and related degrees.

ENTRY REQUIREMENTS:

Students must already have their GCSE English (at grade A*-C / grade 9-4) and have the ability to sit their GCSE Maths whilst competing the access course. *If you need to achieve your GCSE Maths, you will be required to undertake an initial assessment to assess your suitability to sit this.

Fee information: If you are aged 19-24 years and this is your first level 3 course, you may be eligible for free tuition. This course is also part of the free courses for jobs, so you may be eligible for free tuition subject to terms and conditions. If you are 24 years or older and not eligible 'under the free courses for jobs' you will need to apply for an Advanced learner loan. You may not need to repay this loan if you progress to complete your university degree.

INTRODUCTION

Logistics is crucial for business operations, ensuring products are delivered quickly and efficiently with minimal risk. It involves planning, organising, controlling, and executing the movement and management of goods from origin to destination, using various techniques and technologies.

Key aspects include warehousing, inventory management, and transportation. Studying logistics is important because it equips

individuals with the skills needed to optimise supply chains, reduce costs, and improve overall efficiency.

The West Thames College Skills + Logistics Centre is based in Feltham and it is a prime location to support the local area in providing candidates to the workforce.

As a college, we offer a range of courses that support candidates in developing skills to enter one of the largest sectors in the UK.

OPEN AWARDS CERTIFICATE IN INTERNATIONAL SUPPLY CHAIN LOGISTICS

LEVEL 2

The primary purpose of this qualification is to provide progression to a higher level of employment and/or study within the supply chain logistics sector.

STARTS: September 2024 - February 2025

FEES: £598.00

DAYS / TIME: TBC

LOCATION: Skills+Logistics Centre, Feltham

DURATION: 6 months

WHAT WILL I STUDY?

The qualification has been designed to equip students with knowledge and skills for the sector.

NEXT STEPS:

Learners could progress into a variety of opportunities including: Working roles such as: Transport Planner, Supply Chain Manager, Port Worker Apprenticeships for example International Trade and Logistic or International Trade and/ or Logistics Manager. Further studies for Level 3 in International Supply Logistics or similar higher education courses.

ENTRY REQUIREMENTS:

Learners wishing to study at this level would benefit from previously attaining a Level 1 qualification and having a minimum of Level 1 in Functional Skills Maths and English. However, previous work experience and wider studies will be considered.

Courses

Name of Course	Location	Days/Times	Starts	Ends	Fees
Level 2 Open Awards Certificate in International Supply Chain Logistics	Skills+Logistics Centre, Feltham	6 months	September 2024	February 2025	£598.00

Guide to fees and funding:

These icons indicate there are concessions and funding available for students, with some courses being completely free for students!

58  Free Courses for Adults  Advanced Learner Loan  Essential Skills: English and Maths  Essential Skills: Digital Skills

*Concessions are available on most of our courses, with some being free for adults. This depends on eligibility and selected criteria.

Funding is subject to qualifying criteria and selected courses at Level 3 and above.



Media • Fashion • Film



INTRODUCTION

Our Specialist Professional Makeup courses have an outstanding international reputation. To get a place on our Makeup courses, you must apply early and have an excellent portfolio.

We have exceptional success rates and many of our students are snapped up to work for the BBC, West End theatre productions, retailers such as Bobbi Brown, film productions and photoshoots for top magazines.

You'll get to work in our professional makeup studios and theatre, and learn from professional and award-winning teachers with extensive industry experience.

Some of our Makeup courses are in partnership with



KEY FACTS

- Our students have won the prestigious IMATS competition 5 times and the World Body Painting Championships twice!
- Take part in UK and overseas exhibitions such as Clothes Show Live, IMATS and WorldSkills London
- Our students were chosen to do the makeup for the London Olympic and Paralympic opening and closing ceremonies
- Fantastic industry links with Illamasqua, MAC, Makeup Forever, L'Oreal and Charles Fox, ensuring that students use the best products.

MEDIA, MAKEUP AND HAIR

LEVEL 2

VTCT Diploma in Media Makeup and Hair.

STARTS: September 2024- June 2025

FEES: £1,347.00 (Full cost)

DAYS / TIME: One day a week

LOCATION: Isleworth

DURATION: 1 year

WHAT WILL I STUDY?

This course will equip you with all the skills for employment in the hair and makeup industry, within the retail sector, self-employment or within the salon environment.

NEXT STEPS:

Level 3 Theatrical Makeup or Level 2 Hairdressing or Beauty Therapy

ENTRY REQUIREMENTS:

Understanding of English language and English writing skills.

Courses

Name of Course	Location	Days/Times	Starts	Ends	Fees
Level 2 Media, Makeup and Hair	Isleworth	1 day per week	September 2024	June 2025	£1,347.00
Level 3 Makeup Artistry	Isleworth	1 day per week	September 2024	June 2025	£1,231.00
Level 3 Asian Bridal Makeup	Isleworth	1 evening per week	September 2024	November 2025	
Level 2 Award in Photographic Makeup	Isleworth	1 evening per week	February 2025	May 2025	£211.00
Level 4 Specialist Makeup	Isleworth	2 days per week	September 2024	June 2025	

Guide to fees and funding:

These icons indicate there are concessions and funding available for students, with some courses being completely free for students!

Free Courses for Adults
 Advanced Learner Loan
 Essential Skills: English and Maths
 Essential Skills: Digital Skills

*Concessions are available on most of our courses, with some being free for adults. This depends on eligibility and selected criteria.

Funding is subject to qualifying criteria and selected courses at Level 3 and above.





MAKEUP ARTISTRY

LEVEL 3
VTCT Diploma in Makeup Artistry. For those with a passion for the makeup industry.

FEES: £1,231.00 (Full cost)
STARTS: September 2024 – June 2025
DAYS / TIME: One day a week
LOCATION: Isleworth
DURATION: 1 year

WHAT WILL I STUDY?

Media and camouflage makeup, airbrush skills, fashion and photographic makeup, prosthetics, creative hair styling, facial hair, and bald caps. You may visit West End theatre productions, enter competitions, attend the International Trade Makeup Show (IMATS), and have work placements.

NEXT STEPS:

HNC or HND in Specialist Makeup or employment in salons, as a makeover demonstrator, or in TV or media as a trainee makeup artist.

ENTRY REQUIREMENTS:

You must be 19 years old or over and have 4 GCSEs at grades A*-C/9-4 (including English and maths). Alternatively, you may have a Level 2 qualification in Hair & Beauty or Art & Design, plus 2 GCSEs at grade A*-C/9-4 in English and maths or Level 2 Functional Skills in English and maths. You must have a passion for the makeup industry and some makeup or hairdressing experience would be helpful.

ADVANCED
LEARNER
LOAN
AVAILABLE

ASIAN BRIDAL MAKEUP

LEVEL 3
Award in Asian Bridal Makeup.
For beginners or those already working in the industry who wish to offer specialised services.

FEES: Please visit west-thames.ac.uk/fees-policy or contact 020 8326 2000 for more information.
STARTS: September 2024-November 2025
DAYS / TIME: One evening a week
LOCATION: Isleworth
DURATION: 10 weeks

WHAT WILL I STUDY?

Consultation techniques and how to select products to suit the client. You will also learn blending, highlighting and shading, eye and lip application, use of colour, variation of wedding type and removal techniques. The course also covers basic health and safety and positioning.

NEXT STEPS:

You may wish to progress to courses in Asian bridal hair or mehndi.

ENTRY REQUIREMENTS:

None, but you need to be prepared to practice at home.



AWARD IN PHOTOGRAPHIC MAKEUP

LEVEL 2
This course is designed to give you a beginners understanding of the application process of makeup and the products and tools required to apply makeup to a high standard for clients.

FEES: £211.00 (Full cost)
STARTS: February 2025 – May 2025
DAYS / TIME: One evening a week
LOCATION: Isleworth
DURATION: 9 weeks

WHAT WILL I STUDY?

This course is designed to give you a beginners understanding of the application process of makeup and the products and tools required to apply makeup to a high standard. You will be guided with live demonstrations and advice to complete 3 makeup looks. .

NEXT STEPS:

None, but a good understanding of spoken English.

ENTRY REQUIREMENTS:

Level 2 Diploma (1 Year Course).



SPECIALIST MAKEUP

LEVEL 4
UAL Diploma.
This course is for those who are passionate about a career in the exciting and diverse makeup, production, and performance industries.

FEES: Please visit west-thames.ac.uk/fees-policy or contact 020 8326 2000 for more information.
STARTS: September 2024 – June 2025
DAYS / TIME: Two days a week
LOCATION: Isleworth
DURATION: 1 year

WHAT WILL I STUDY?

Through this exciting course you will benefit from a practiced-based course, supported by contextual studies and work experience on professional performances. The course includes the following skills and knowledge; dressing of wigs for different historical periods, makeup for live performance, body painting and body art, makeup for editorial, current fashion trends makeup, and costume. You will also collaborate with other student groups within the college on shows and other live performances.

ASSESSMENT METHOD:

This qualification consists of 3 units and is assessed through a final major project.

NEXT STEPS:

You may wish to progress to university, to work, or self-employment.

ENTRY REQUIREMENTS:

You should have a Level 3 or equivalent qualification in makeup, or an art and design-based qualification. For students who are aged 19+. Work and life experience will also be taken into consideration. A good standard of written English is also essential.

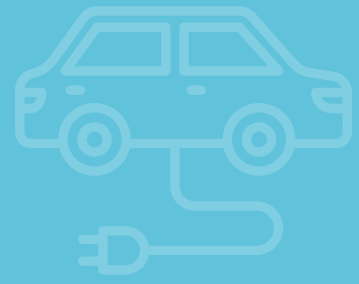
Guide to fees and funding:

These icons indicate there are concessions and funding available for students, with some courses being completely free for students!

Free Courses for Adults Advanced Learner Loan Essential Skills: English and Maths Essential Skills: Digital Skills

*Concessions are available on most of our courses, with some being free for adults. This depends on eligibility and selected criteria.

Funding is subject to qualifying criteria and selected courses at Level 3 and above.



Mechanic • Maintenance

INTRODUCTION

Our Motor Vehicle courses will teach you motor vehicle maintenance and repair in a large workshop based at our Skills + Logistics Centre in Feltham.

Courses are taught by highly experienced motor-trade professionals. They will give you the relevant skills to start a motor vehicle apprenticeship or begin work in the industry.

KEY FACTS

- Huge newly refurbished industry standard vehicle workshop
- Work on live projects
- Great job opportunities.

MOTOR VEHICLE MAINTENANCE

FREE COURSE FOR ADULTS

LEVEL 1

City & Guilds Award in Systems Maintenance. Held in our motor vehicle workshops at the Skills + Logistics Centre, this course will enable you to develop skills in car maintenance.

STARTS: September 2024 – December 2025

FEES: £488.00 (Full cost)

DAYS / TIME: Two evenings a week

LOCATION: Skills+Logistics Centre, Feltham

DURATION: 14 weeks

WHAT WILL I STUDY?

Spark and compression ignition engine systems, steering and suspension, vehicle braking systems, and the retail automotive maintenance and repair industry.

NEXT STEPS:

Learners can progress to further study at Level 1 Certificate in Systems Maintenance also delivered at the Skills+Logistics Centre in Feltham or employment.

ENTRY REQUIREMENTS:

There are no entry requirements, but an interview will be required.

Courses

Name of Course	Location	Days/Times	Starts	Ends	Fees
Level 1 Award Motor Vehicle Maintenance	Skills+Logistics Centre, Feltham	Two evenings a week	September 2024	December 2025	£488.00
Level 1 Certificate Motor Vehicle Maintenance	Skills+Logistics Centre, Feltham	Two evenings a week	January 2025	June 2025	£687.00
Level 1 Electric Vehicles	Skills+Logistics Centre, Feltham	Two evenings a week	September 2024 January 2025 March 2025	September 2024 January 2025 March 2025	£100.00

Guide to fees and funding:

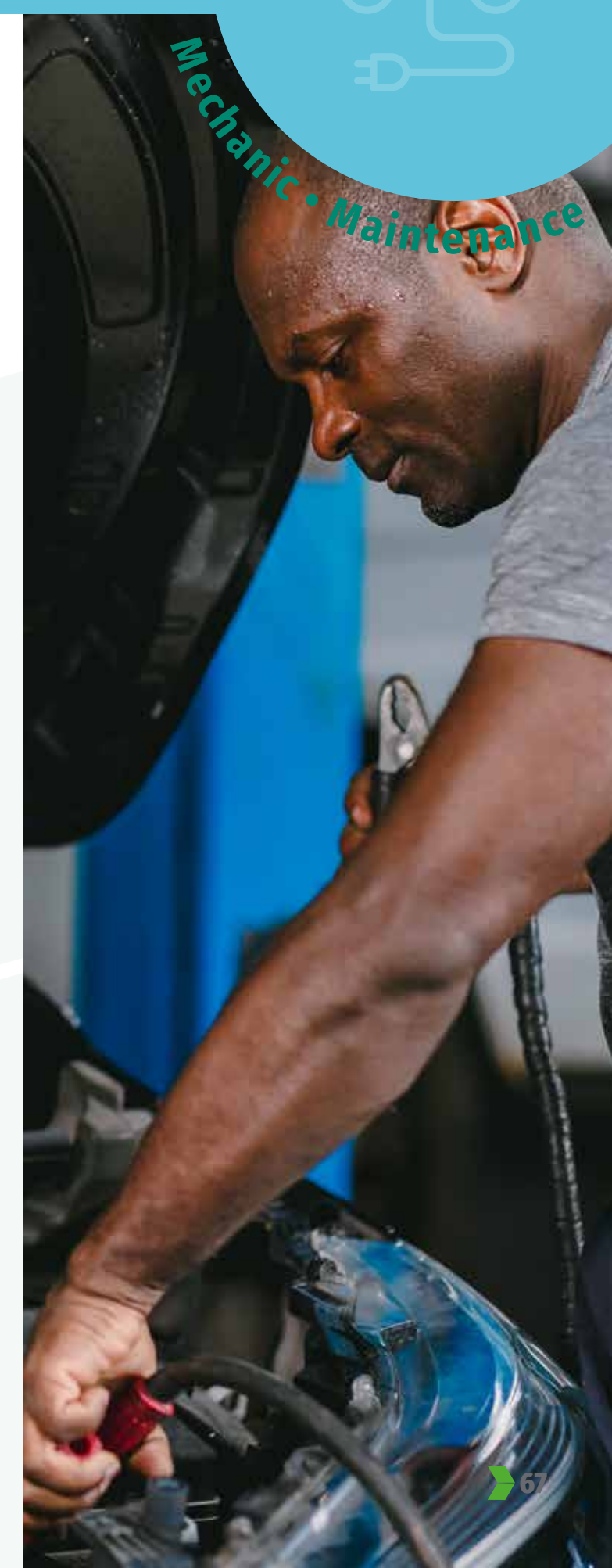
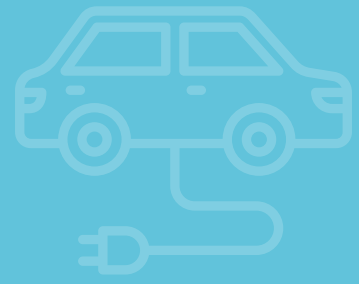
These icons indicate there are concessions and funding available for students, with some courses being completely free for students!

64 Free Courses for Adults Advanced Learner Loan Essential Skills: English and Maths Essential Skills: Digital Skills

*Concessions are available on most of our courses, with some being free for adults. This depends on eligibility and selected criteria.

Funding is subject to qualifying criteria and selected courses at Level 3 and above.





MOTOR VEHICLE MAINTENANCE

FREE COURSE FOR ADULTS

LEVEL 1

City & Guilds Certificate in Systems Maintenance. Held in our motor vehicle workshops at the Skills + Logistics Centre, this course will enable you to develop skills in car maintenance.

FEES: £687.00 (Full cost)

STARTS: January 2025 – June 2025

DAYS / TIME: Two evenings a week

LOCATION: Skills+Logistics Centre, Feltham

DURATION: 21 weeks

WHAT WILL I STUDY?

You will develop knowledge and skills in:

- Health and safety practices in vehicle maintenance and good housekeeping in the automotive environment
- Tools, equipment and materials for vehicle maintenance.

You will study:

- Introduction to the retail automotive maintenance and repair industry
- Spark ignition engine systems, components and operation
- Compression ignition engine systems, components and operation
- Steering and suspension systems components and maintenance (4 wheels or more)
- Vehicle braking systems components and maintenance.

NEXT STEPS:

Learners can progress to further study at Level 2 Certificate in Systems Maintenance or employment.

ENTRY REQUIREMENTS:

Level 1 Award Motor Vehicle Maintenance, an interview will be required.

ELECTRIC VEHICLES

FREE COURSE FOR ADULTS

LEVEL 1

Award in Electric/Hybrid Vehicle awareness. This course is for those with an interest in Green Skills.

FEES: £100.00 (Full cost)

STARTS: September 2024, January 2025, March 2025

DAYS / TIME: Two evenings a week

LOCATION: Skills+Logistics Centre, Feltham

DURATION: 2 weeks

WHAT WILL I STUDY?

The course contains one mandatory unit covering: the types of Electric/Hybrid vehicles available, Hazards associated with motor vehicles, high energy.

NEXT STEPS:

Completion of this course will allow you to progress onto the Level 2 Award in Electric/ Hybrid Vehicle Routine Maintenance Activities.

ENTRY REQUIREMENTS:

There are no formal entry requirements for this qualification and learners are not expected to have any prior knowledge or experience, however an interest in the subject area is advisable.

Guide to fees and funding:

These icons indicate there are concessions and funding available for students, with some courses being completely free for students!

Free Courses for Adults
 Advanced Learner Loan
 Essential Skills: English and Maths
 Essential Skills: Digital Skills

*Concessions are available on most of our courses, with some being free for adults. This depends on eligibility and selected criteria.

Funding is subject to qualifying criteria and selected courses at Level 3 and above.



INTRODUCTION

We offer some of the most highly sought after Science courses in London: BTEC Applied Science courses as well as HND/HNC Applied Biology for advanced students. Study at West Thames College to prepare for a science degree and a range of jobs in science. You'll learn from highly qualified staff with science-related Masters and PhD degrees as well as guest industry speakers and specialist lectures. You'll have work experience opportunities and take part in visits to universities, museums and conferences, as well as events such as National Science Week.

KEY FACTS

- New laboratories including a forensics lab
- A science qualification gives students lots of options, apply to study a science degree at Kingston University or another university or start your career.



HNC – APPLIED BIOLOGY

BTEC LEVEL 4
This one-year higher education vocational qualification has units that are related to applied biology. You will learn by completing projects and assignments that are based on realistic situations, activities and demands in the biological sciences.

STARTS: September 2024 – June 2025
FEES: £5,000 (Full cost)
DAYS / TIME: 1 evening per week
LOCATION: Isleworth
DURATION: 1 year
MODE OF DELIVERY: In class

WHAT WILL I STUDY?

- MANDATORY UNITS:**
- Cell biology
 - Biochemistry of macromolecules and metabolic pathways
 - Physiology of cellular systems in animals
 - Laboratory techniques for applied biology
 - Analysis of scientific data and information

- SPECIALIST UNITS:**
- Neurophysiology and homeostatic control of the human body
 - Molecular biology and genetics
 - The immune response system
 - Infectious diseases
 - Medical microbiology
 - Human health and nutrition

- Food molecules, additives and their roles
- Ecological principles and their application
- Chemistry for the applied biologist
- Biodiversity, conservation and threats
- Plant physiology and environmental adaptation
- Work-based experience
- Personal and professional development
- Employability skills.

NEXT STEPS:
Progress to the Higher National Diploma in Applied Biology or the second year of a degree course at university, such as BSc in Biomedical Science or Biology or find employment in biological sciences.

ENTRY REQUIREMENTS:
You should have at least one of the following meeting a minimum of 120 UCAS points:

- BTEC Level 3 Diploma or Extended Diploma in Applied Science or a related discipline
- Access to Science
- At least two A Levels in science subjects

Applicants are also expected to have a good level of literacy and numeracy; a relevant Level 2 qualification (eg GCSE English and maths at grade C / grade 5 or above) is desirable.

ASSESSMENT
The course is internally assessed by means of assignments which are graded, and you will also receive an overall grade for the qualification.



Courses

Name of Course	Location	Days/Times	Starts	Ends	Fees
Level 4 HNC - Applied Biology	Isleworth	1 evening per week	September 2024	June 2025	£5,000
Level 5 HND - Applied Biology	Isleworth	1 evening per week	September 2024	June 2025	£5,000

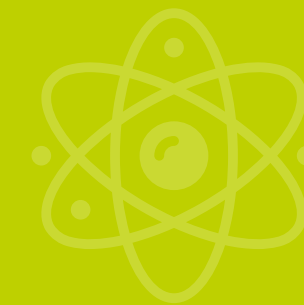
Guide to fees and funding:

These icons indicate there are concessions and funding available for students, with some courses being completely free for students!

Free Courses for Adults
 Advanced Learner Loan
 Essential Skills: English and Maths
 Essential Skills: Digital Skills

*Concessions are available on most of our courses, with some being free for adults. This depends on eligibility and selected criteria.

Funding is subject to qualifying criteria and selected courses at Level 3 and above.



Biology • Teaching

ADVANCED LEARNER LOAN AVAILABLE

HND – APPLIED BIOLOGY

BTEC LEVEL 5

This two-year higher education vocational qualification has units that are related to applied biology. You will learn by completing projects and assignments that are based on realistic situations, activities and demands in the biological sciences.

STARTS: September 2024 – June 2025

FEES: £5,000 (Full cost)

DAYS / TIME: 1 evening per week

LOCATION: Isleworth

DURATION: 1 year

MODE OF DELIVERY: In class

WHAT WILL I STUDY?

MANDATORY UNITS:

- Cell biology
- Biochemistry of macromolecules and metabolic pathways
- Physiology of cellular systems in animals
- Laboratory techniques for applied biology
- Analysis of scientific data and information

SPECIALIST UNITS:

- Neurophysiology and homeostatic control of the human body
- Molecular biology and genetics
- The immune response system
- Infectious diseases
- Medical microbiology

- Human health and nutrition
- Food molecules, additives and their roles
- Ecological principles and their application
- Chemistry for the applied biologist
- Biodiversity, conservation and threats
- Plant physiology and environmental adaptation
- Work-based experience
- Personal and professional development
- Employability skills.

NEXT STEPS:

Progress to the second year of a degree course at university, such as BSc in Biomedical Science or Biology or find employment in biological sciences.

ENTRY REQUIREMENTS:

You should have at least one of the following meeting a minimum of 120 UCAS points:

- BTEC Level 3 Diploma or Extended Diploma in Applied Science or a related discipline
- Access to Science
- At least two A Levels in science subjects.

Applicants are also expected to have a good level of literacy and numeracy; a relevant Level 2 qualification (eg GCSE English and maths at grade C / grade 5 or above) is desirable.

ASSESSMENT

The course is internally assessed by means of assignments which are graded, and you will also receive an overall grade for the qualification.



Guide to fees and funding:

These icons indicate there are concessions and funding available for students, with some courses being completely free for students!

70 Free Courses for Adults Advanced Learner Loan Essential Skills: English and Maths Essential Skills: Digital Skills

*Concessions are available on most of our courses, with some being free for adults. This depends on eligibility and selected criteria.

Funding is subject to qualifying criteria and selected courses at Level 3 and above.

INTRODUCTION

Our teaching courses include CELTA, AET and DET/ ProfGCE, are designed to give you the skills you'll need to find a teaching job or to develop your skills.

You'll get excellent support from our experienced tutors, as well as a mentor system, workshop and online help. We take a practical, hands-on approach for new teachers and operate flexible study times to fit in with your work and lifestyle.

KEY FACTS

- Excellent success rates:
100% success rate in 2014-16 two year DET course
94% success rate in 2017/18 AET course
97% success rate in 2015/16 CELTA course
- Gain qualifications required for teaching in the FE and lifelong learning sectors
- Diploma in Education and Training (DET) / Professional Graduate Certificate of Education (ProfGCE) accredited by Canterbury Christchurch University

Courses

Name of Course	Location	Days/Times	Starts	Ends	Fees
Level 5 Certificate in English Language Teaching to Adults (CELTA)	Isleworth	Two days a week, or two evenings a week 11 weeks part-time or 4 weeks intensive	September 2024 April 2025	December 2024 June 2025	£1,390
Level 5 or 6 Certificate in Education in Further Education and Skills	Isleworth	Tuesday/Thursday, one evening per week 2 years part-time evening	September 2024	June 2025	£308.00
Level 3 Award in Education and Training	Isleworth	1 day per week	September 2024	January 2025	£222.00
Level 2 Supporting Teaching and Learning in Schools	Isleworth	1 day per week	January 2025	February 2025	£3,540.00

CERTIFICATE IN ENGLISH LANGUAGE TEACHING TO ADULTS (CELTA)

LEVEL 5

University of Cambridge Certificate (CELTA). CELTA is an internationally recognised initial teacher training qualification designed for those who wish to teach ESOL or EFL and includes teaching practice and observation. You will learn the principles of effective teaching and acquire practical skills for teaching English to adult learners.

STARTS: 4 September 2024

FEES: £1,390

DAYS / TIME: There are 4 courses in the year:

SEPTEMBER-DECEMBER

(11 weeks, blended: online learning with face-to-face teaching practice Tuesdays & Thursdays, 4.30pm - 8pm).

APRIL-JUNE

(11 weeks part-time, Classroom learning Tuesdays & Thursdays, 9.30am - 1pm).

LOCATION: Isleworth

DURATION: 11 weeks part-time or 4 weeks intensive

WHAT WILL I STUDY?

You will develop familiarity with the principles of effective teaching, language analysis and awareness, planning and resources, language skills, methodology, teaching skills and professionalism and acquire practical skills for teaching English to

adult learners.

The course includes the learning theory (online for blended courses), teaching practice, observation of experienced teachers in the classroom and completion of a range of practically focused written assignments.

NEXT STEPS:

After completing the training programme, you can develop a career in teaching English language to adults either in the UK or overseas. To gain fully qualified teacher status in the post-16 sector in the UK, you could progress to the Certificate in Education/PGCE (DTLLS).

ENTRY REQUIREMENTS:

Two A Levels and 5 GCSEs or equivalent. You also need to have a very good command of written and spoken English. No previous teaching experience is necessary. You do not need a degree to enrol on the CELTA course. However, applicants should be aware that when seeking teaching employment after the course, some employers in some countries may require a degree.

Guide to fees and funding:

These icons indicate there are concessions and funding available for students, with some courses being completely free for students!

Free Courses for Adults Advanced Learner Loan Essential Skills: English and Maths Essential Skills: Digital Skills

*Concessions are available on most of our courses, with some being free for adults. This depends on eligibility and selected criteria.

Funding is subject to qualifying criteria and selected courses at Level 3 and above.



Teaching • Tutoring

ADVANCED LEARNER LOAN AVAILABLE

CERTIFICATE IN EDUCATION IN FURTHER EDUCATION AND SKILLS

LEVEL 5 OR LEVEL 6

Level 5 Diploma (DET) or Level 6 Certificate of Education (PGCE).

This 2-year part-time university course is offered in partnership with Canterbury Christ Church University. It leads to the Diploma in Education and Training (DET Level 5) or Professional Graduate Certificate of Education (PGCE Level 6). Both qualifications are full, recognised teaching qualifications for the FE, adult, and voluntary learning sectors.

FEES: £3,540.00 (Full cost)

STARTS: September 2024 – June 2024

DAYS / TIME: Tuesday/Thursday, one evening per week

LOCATION: Isleworth

DURATION: 2 years part-time evening

WHAT WILL I STUDY?

This course aims to develop the knowledge, skills and understanding of teachers and trainers working with students aged 14+ in colleges (FE), adult and community settings, prisons and probation service, secondary schools, and private training providers. Specialist pathways are available for specialist teachers of ESOL, Maths and SEND. The course consists of 6 modules, 20 credits each, taken over 2 years.

NEXT STEPS:

Teach/train in a variety of settings in Further Education Colleges, Adult and Community Learning, 14-19 units in Schools and Academies and Private Training Organisations. Successful completion of this course will allow you to apply for Qualified Teacher,

Learning and Skills (QTLS) status, which qualifies you to teach in FE and secondary schools.

ENTRY REQUIREMENTS:

A pass grade A*C/9-4 in GCSE English and Maths. We will also accept FS Level 2 Pass in English and Maths, IELTS 5.5 and other equivalent qualifications. We will assess your level of English before you start the course as you must be able to write at an academic degree level. A qualification in your subject area (minimum Level 3 for skills-based subjects or a degree for academic subjects). No previous teaching experience is necessary. A work placement is required.

COURSE COULD BE FREE
under the GLA Free Courses for Jobs offer

FREE COURSES FOR ADULTS*

Depending on your circumstances, this course may be free under the GLA Free Courses for Jobs offer.

AWARD IN EDUCATION AND TRAINING

LEVEL 3

City & Guilds Award.

The Award in Education and Training is an introduction to teaching in Further Adult and Community Education.

FEES: £222.00

STARTS: September 2024 – January 2025

DAYS / TIME: One day a week

LOCATION: Isleworth

DURATION: 13 weeks

WHAT WILL I STUDY?

This course is designed to give you an insight into the roles, responsibilities and relationships in education

and training; teaching and learning approaches; session planning skills; delivery of inclusive sessions which motivate learners; and using different assessment methods and record keeping.

NEXT STEPS:

You may wish to go on to the Diploma in Education and Training (DET)/PGCE in order to achieve a full teaching qualification.

ENTRY REQUIREMENTS:

You should have a qualification or extensive experience in the subject you intend to teach, and a pass grade A*C/9-4 in GCSE English and Maths or equivalent. IT skills are desirable. Applicants who do not have GCSE English or Maths may be admitted to the course following initial assessment completed during the interview.

COURSE COULD BE FREE
under the GLA Free Courses for Jobs offer

FREE COURSES FOR ADULTS*

Depending on your circumstances, this course may be free under the GLA Free Courses for Jobs offer.

SUPPORTING TEACHING AND LEARNING IN SCHOOLS

LEVEL 2

The course is suitable for people who are just starting their careers as teaching assistants or who have just started to volunteer in a school setting.

FEES: £308.00

STARTS: January 2025, February 2025

DAYS / TIME: One day a week

LOCATION: Isleworth

DURATION: Three months

WHAT WILL I STUDY?

The course contains nine mandatory units and a choice of two optional units. Mandatory units are:

- Child and young person development.
- Safeguarding the welfare of children and young people.
- Communication and professional relationships.
- Equality, diversity and inclusion.
- Support children and young people's positive behaviour.
- Maintain and support relations with children and young people.
- Support children and young people's health and safety.
- Support learning activities.
- Help and improve your own and team practice in schools.

NEXT STEPS:

Successful completion of the Level 2 Certificate could lead to progression onto Level 3 and/or employment as a Teaching Assistant in a school. Some students then go on to do a Foundation Degree or teacher training.

ENTRY REQUIREMENTS:

A good standard of English is required. There is a test for all applicants to test their English skills before a place on the course is offered. Applicants should be working in learning support at a primary, secondary or specialist school for the equivalent of one to two days per week. This course is ideally suited to those who work in a voluntary capacity or who are new to the role of Teaching Assistant.



Isleworth Campus:

London Road, Isleworth, Middlesex TW7 4HS
020 8326 2000

Feltham Campus:

77 Boundaries Road, Feltham, Middlesex TW13 5DR
020 8326 2000